

PIECECOOL
拼酷

磁旋蓝甲
BLUE MAGNETIC ROTATION
P093

拼装说明书



AGES 14+

本产品为金属制品，14岁以下需由成人陪同完成！

© WIST PLASTIC & METAL TECHNOLOGY LIMITED. ALL RIGHTS RESERVED.

电子版下载地址：<http://www.piececool.com/cpshuoming/P093.pdf>

Piececool
拼酷

前言

感谢您购买拼酷磁旋蓝甲金属拼装模玩，在开始拼装此款模型前，请先阅读本说明书，请按照说明书拼装步骤要求拼装此款模型。

请将金属片板件及未拼装完的金属零件放置于小孩不能触及的地方，避免发生意外，此款模型适合14岁以上年龄层，14岁以下需由成人陪同完成。

在拼装前请先阅读拼前须知，准备拼装工具及知晓拼装方法，方便拼装过程的顺利进行。

磁旋蓝甲模型在拼装过程中能训练手脑协调能力，建立空间想象力，培养耐心与信心。由于磁旋蓝甲模型零件数较多，拼装时间较长，请玩家保持信念。

拼酷秉承“让每个玩家都能享受金属拼装带来的乐趣与成就”的品牌使命，一如既往的保持对金属模玩创作的热情，研发更多为拼酷粉丝喜爱的作品！再次感谢您购买拼酷磁旋蓝甲金属模玩，愿拼酷模玩能与您相伴并给您带来快乐。

piececool 拼酷

目录

1 拼前需知

- (1) 准备工具.....4
- (2) 取下零件.....4
- (3) 认清零件.....4
- (4) 折叠零件.....5
- (5) 固定零件.....5
- (6) 注意事项.....5

2 拼装步骤

- Step.1 头部拼装.....9
- Step.2 胸部拼装.....13
- Step.3 左腿拼装.....21
- Step.4 右腿拼装.....31
- Step.5 腰部拼装.....37
- Step.6 前面装备拼装.....41
- Step.7 后面装备拼装.....45
- Step.8 左臂拼装.....51
- Step.9 右臂拼装.....57
- Step.10 肩部拼装.....61
- Step.11 肩部装备拼装.....67
- Step.12 武器装备拼装.....73

1.拼前需知

(1) 准备工具



水口钳工具

金属拼装模型必备工具，
修剪金属片板件上的零件水口位。



尖嘴钳工具

金属拼装模型必备工具，
折弯金属零件上的折叠线和扣点。

(2) 取下零件



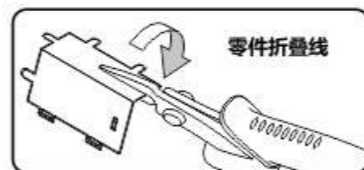
使用水口钳剪断金属零件上的水口，
将需要的金属零件从金属片板件取下。

(3) 认清零件



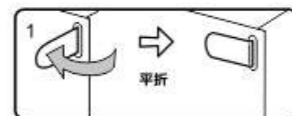
认清金属零件上
的扣点、折叠线、扣孔的样子。

(4) 折叠零件

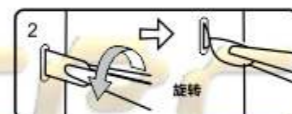


使用尖嘴钳，参照拼装说明书
将金属零件折成形状。

(5) 固定零件



扣点插入扣孔，平折
90°，固定零件。



扣点插入扣孔，旋转
90°，固定零件。

(6) 注意事项

①剪金属零件时请剪零件“水口位”，请勿将“扣点”当成“水口位”剪下，每次剪零件时请仅剪当前步骤的零件，切勿一次性将所有零件全部剪下，避免丢失；

②当遇到折叠线的零件，请注意金属片正反面及拼折方向，请按照说明书说明的方向，轻剪慢折，最好一次折叠完成，请勿反复折叠，避免零件损坏。



纹理面



注意细节



非纹理面

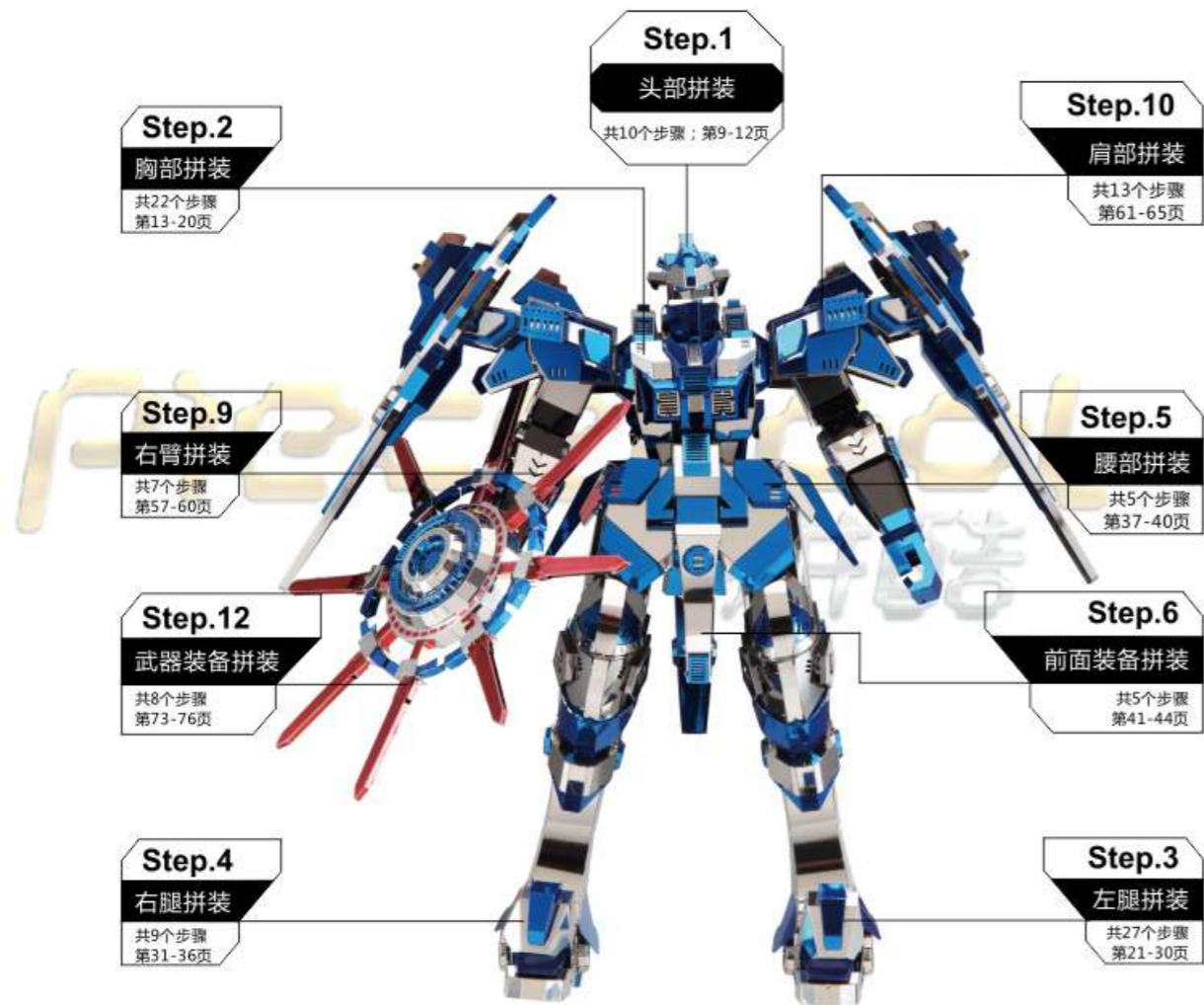


注意片对称



无需使用胶水，建议使用拼酷正品拼装工具（水口钳、尖嘴钳），拼装时更省心、省力，拼装后作品更精细、美观！

Don't need to use glue, we suggest to use the assembly tool with Piececool brand (Cutting Pliers, Bending Pliers). Saving the assembly time, assembling the model easily, making the model more exquisite and beautiful!



Step.10

肩部拼装

共13个步骤
第61-66页

Step.11

肩部装备拼装

共8个步骤
第67-72页

Step.8

左臂拼装

共10个步骤
第51-56页

Step.11

肩部装备拼装

共8个步骤
第67-72页

Step.7

后面装备拼装

共9个步骤
第45-50页

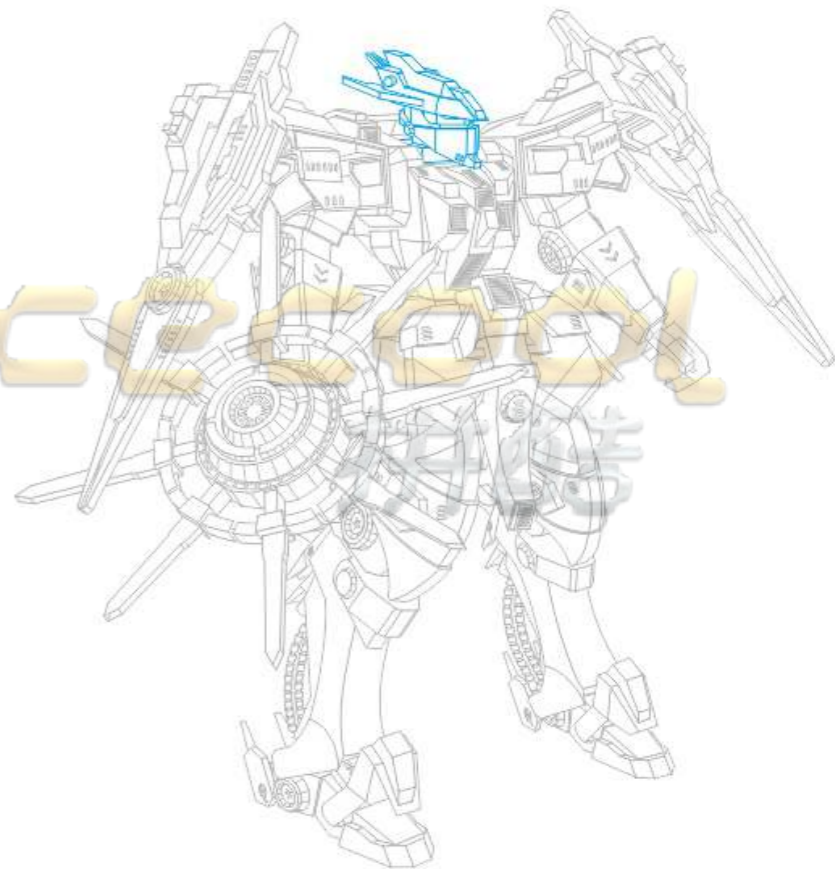


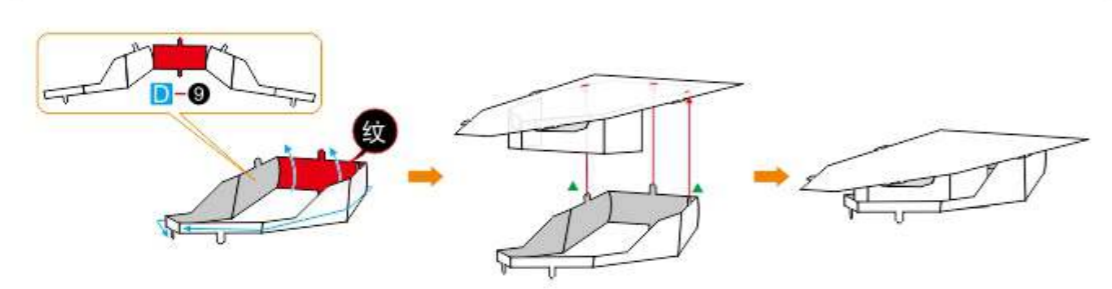
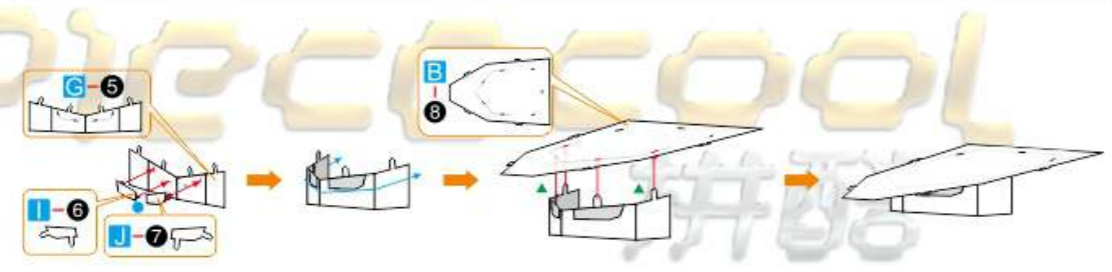
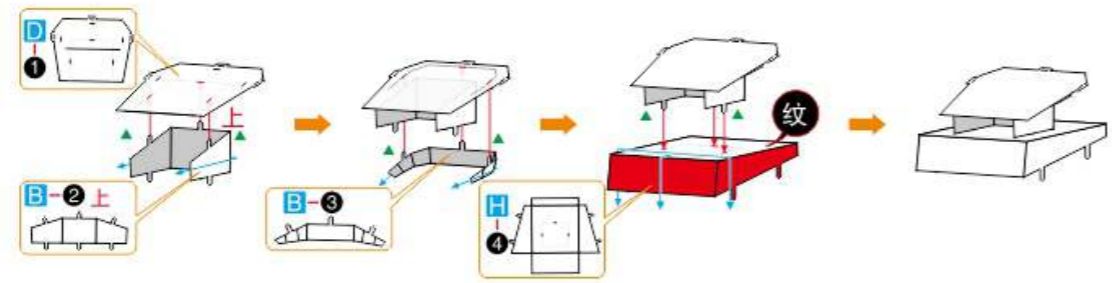
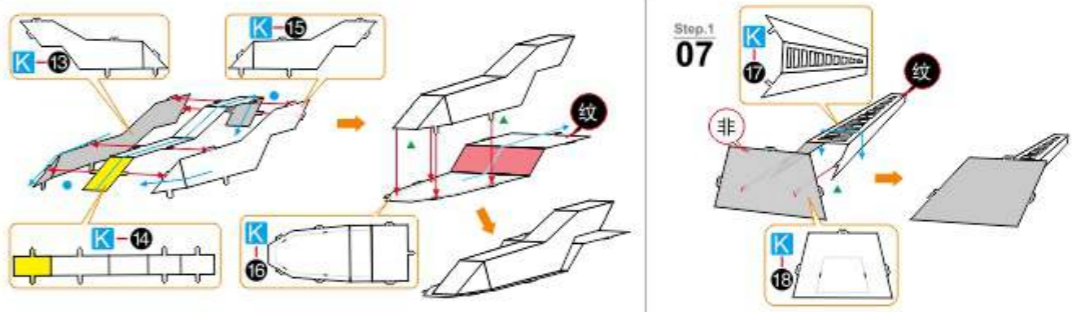
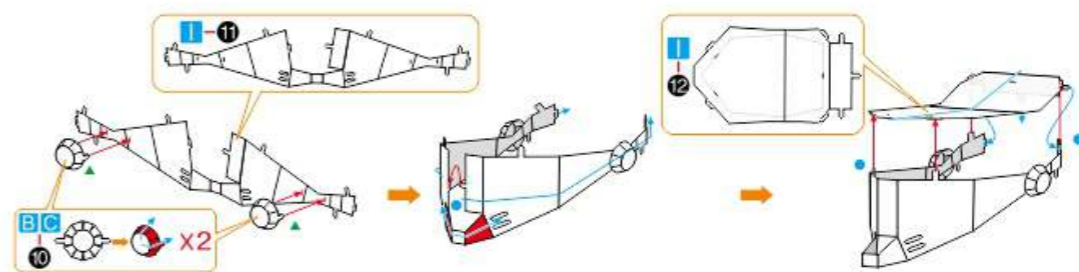
PIECECOOL

拼酷

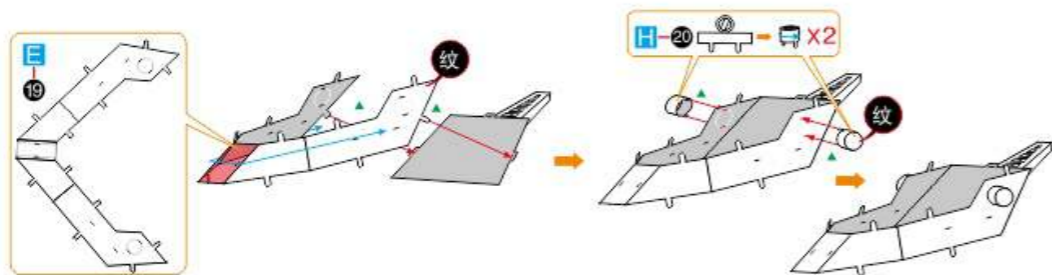
Step.1 头部拼装

- 第01小步：零件编号D1,B2,B3,H4
- 第02小步：零件编号G5,J6,J7,B8
- 第03小步：零件编号D9
- 第04小步：零件编号B10,C10,I11,I12
- 第06小步：零件编号K13,K14,K15,K16
- 第07小步：零件编号K17,K18
- 第08小步：零件编号E19,H20
- 第09小步：零件编号B21,C22
- 第10小步：零件编号K23

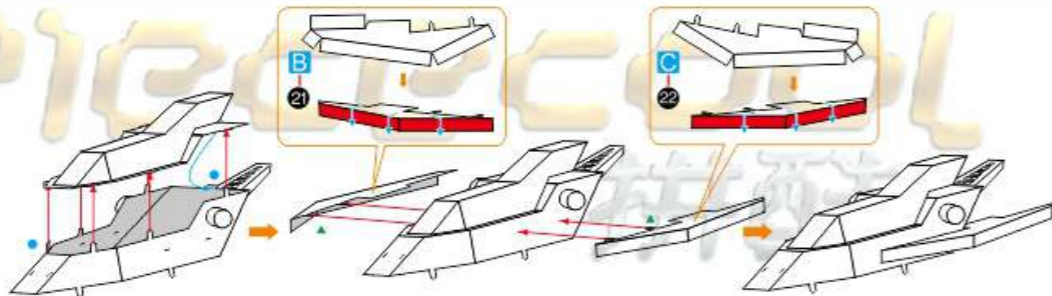




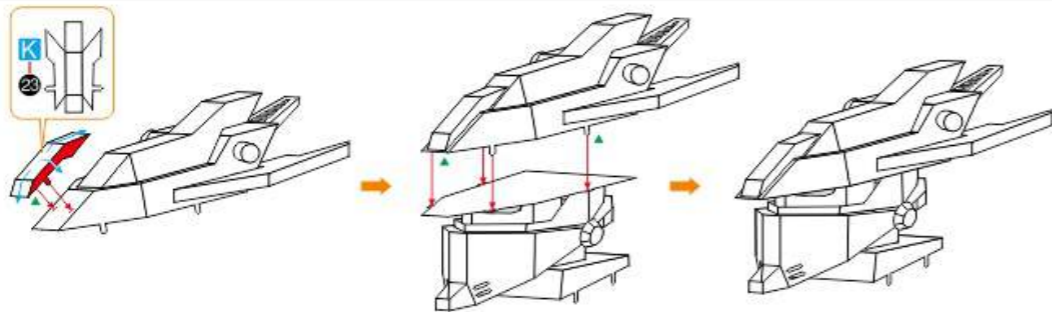
Step.1
08



Step.1
09



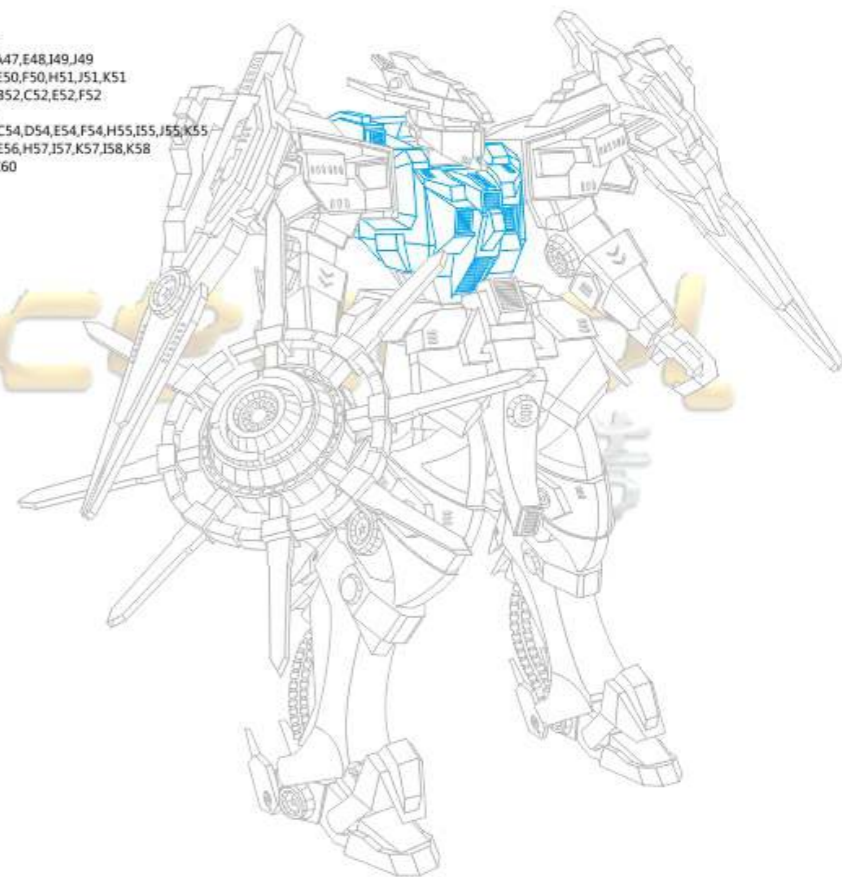
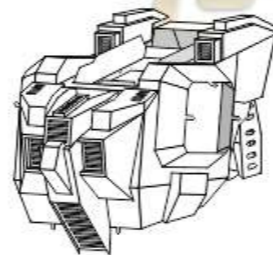
Step.1
10

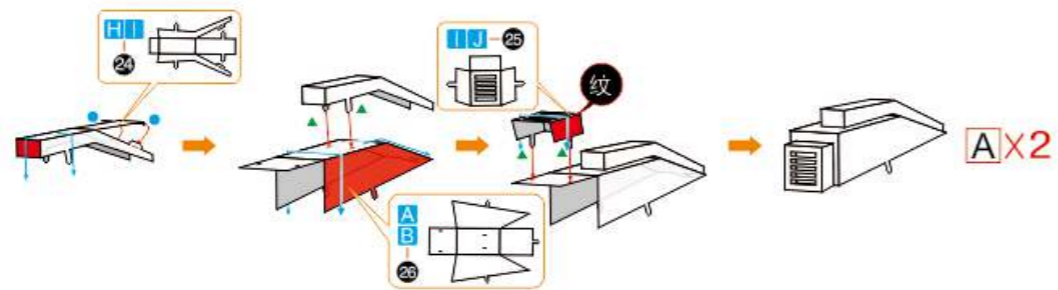
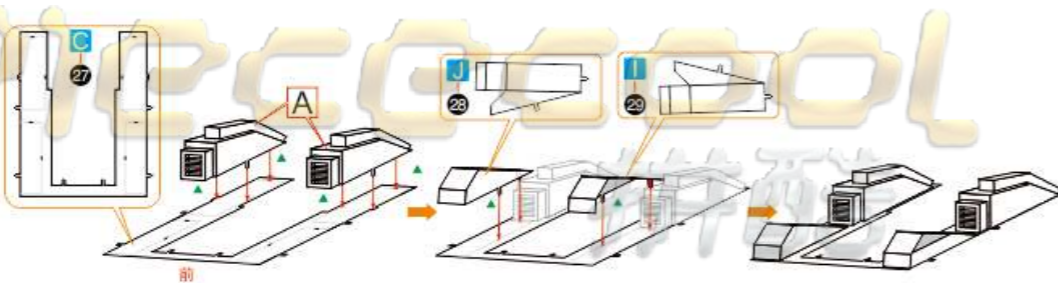
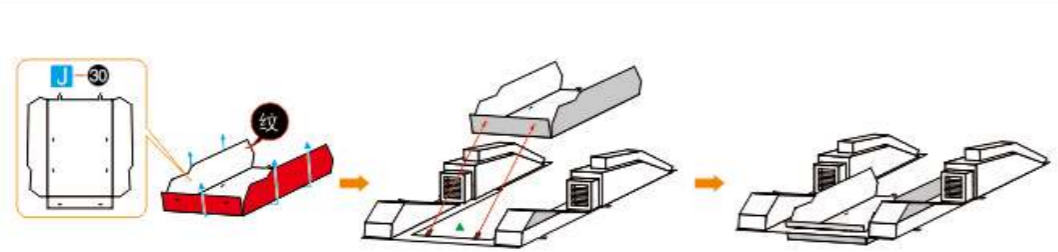
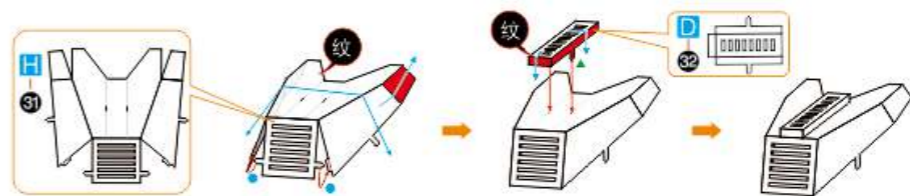
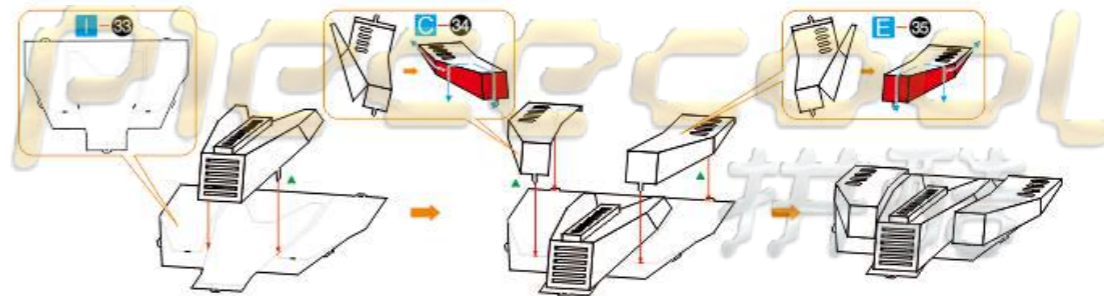
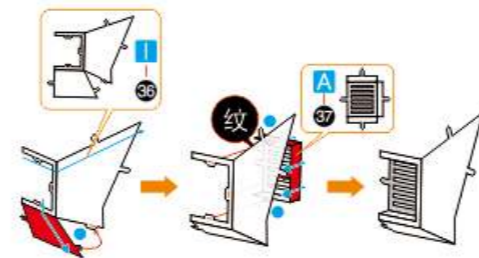
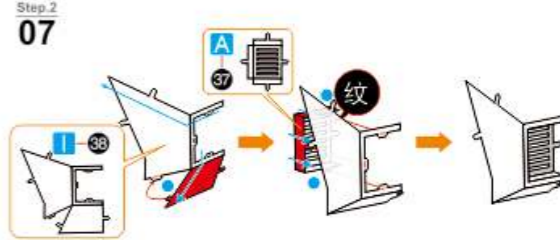


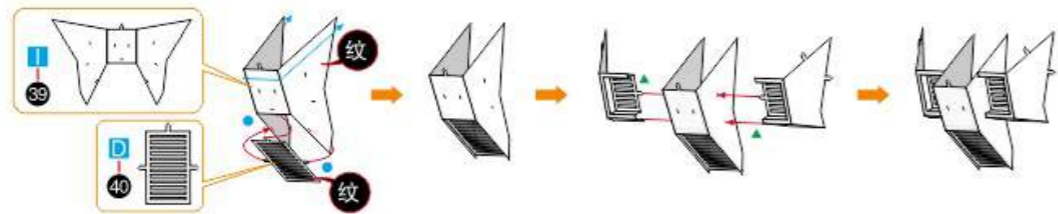
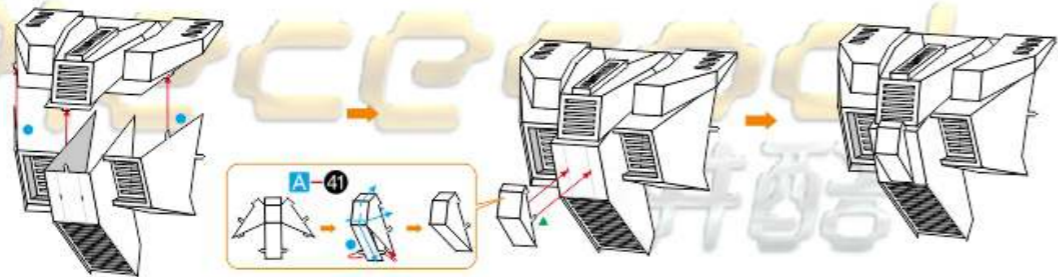
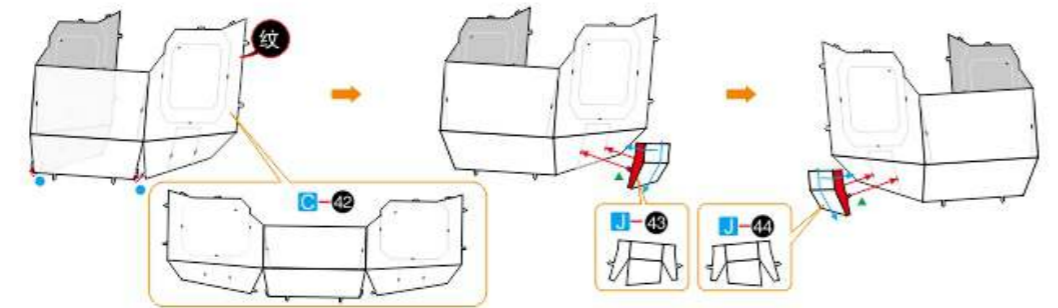
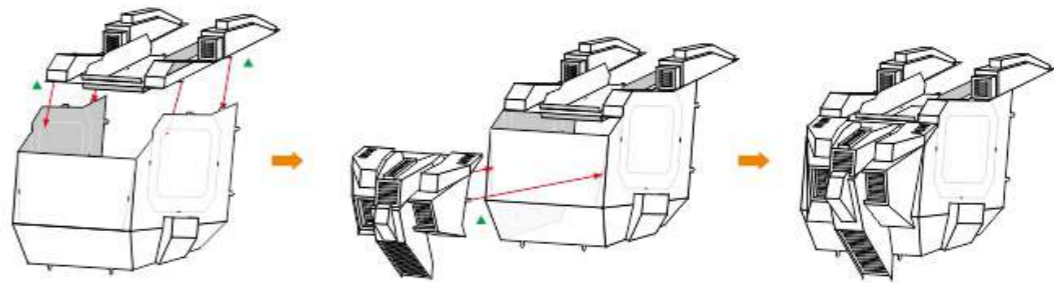
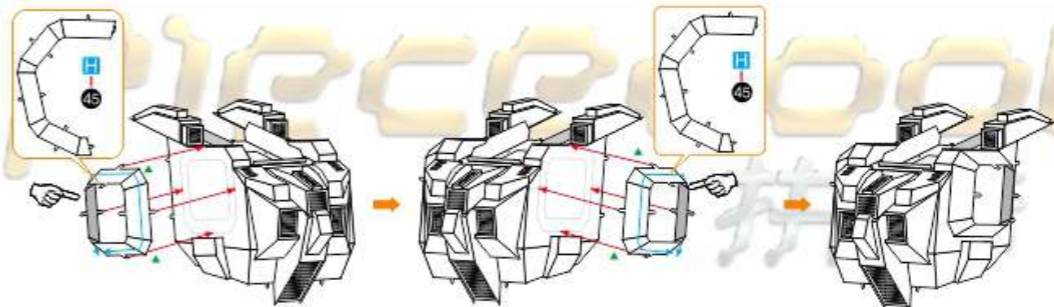
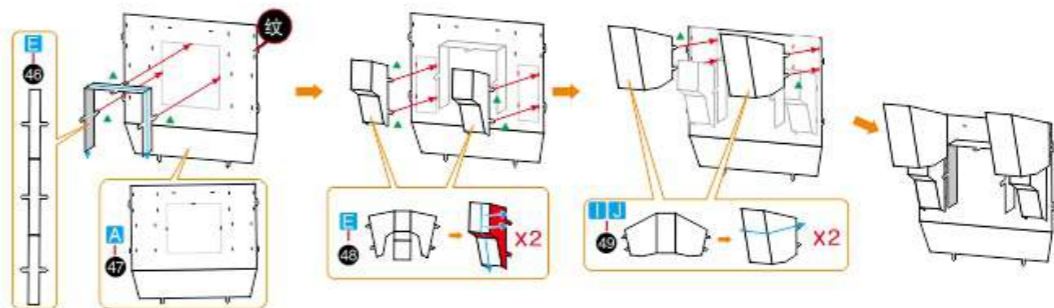
Step.2 胸部拼装

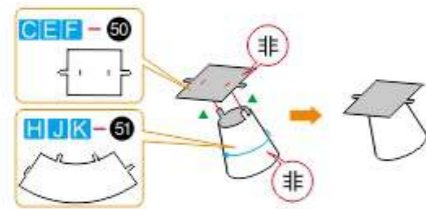
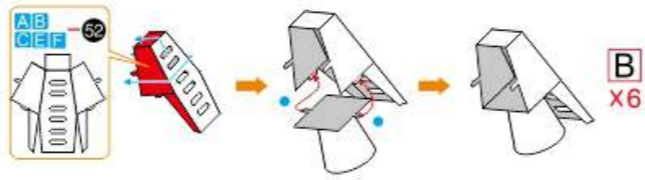
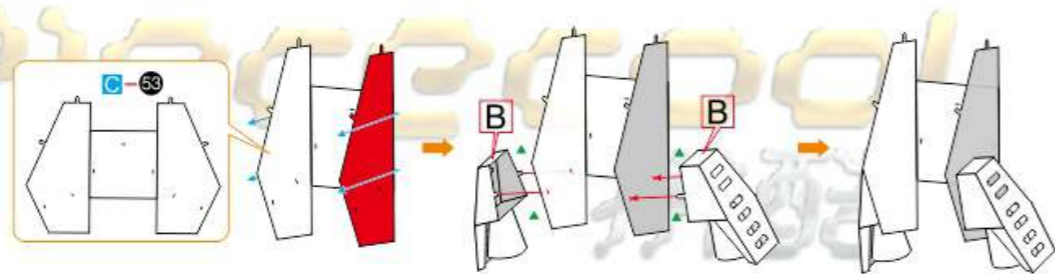
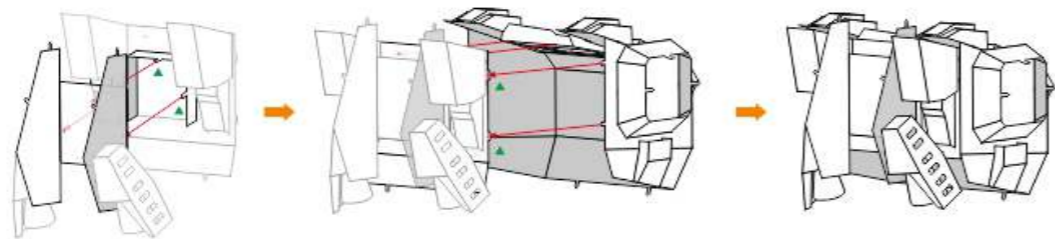
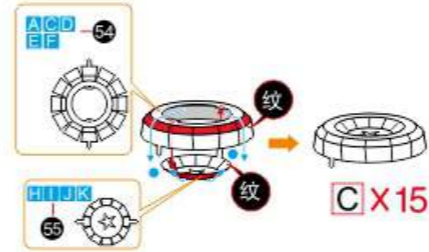
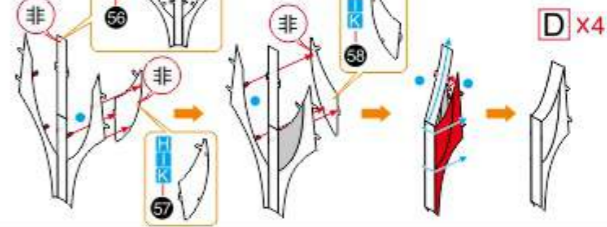
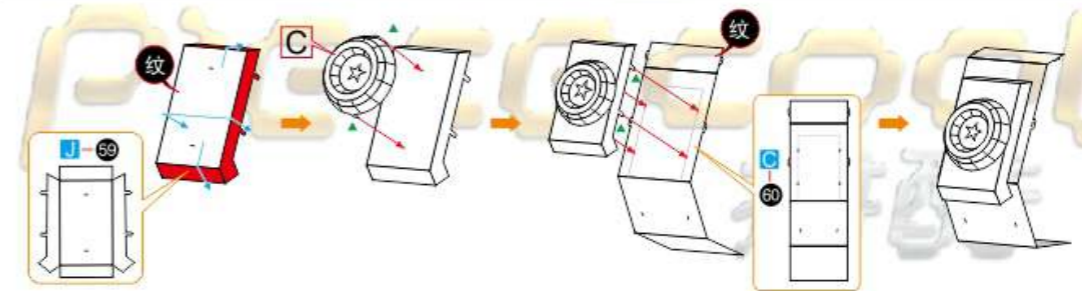
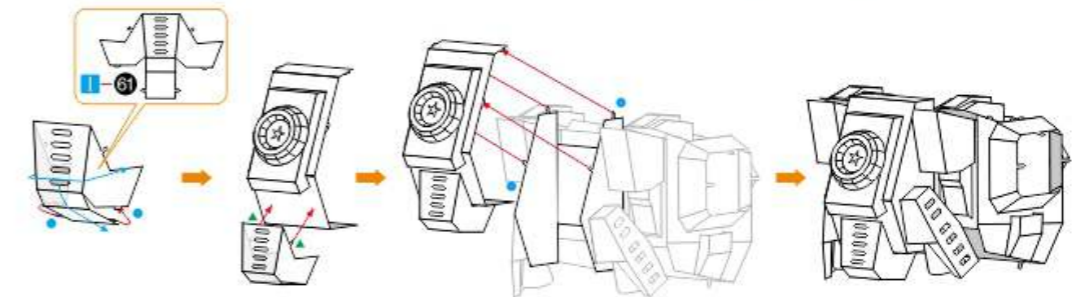
- 第01小步：零件编号H24,I24,I25,J25,A26,B26
- 第02小步：零件编号C27,I28,I29
- 第03小步：零件编号I30
- 第04小步：零件编号H31,D32
- 第05小步：零件编号I33,C34,E35
- 第06小步：零件编号I36,A37
- 第07小步：零件编号I38,A37
- 第08小步：零件编号I39,D40
- 第09小步：零件编号A41
- 第10小步：零件编号C42,I43,I44

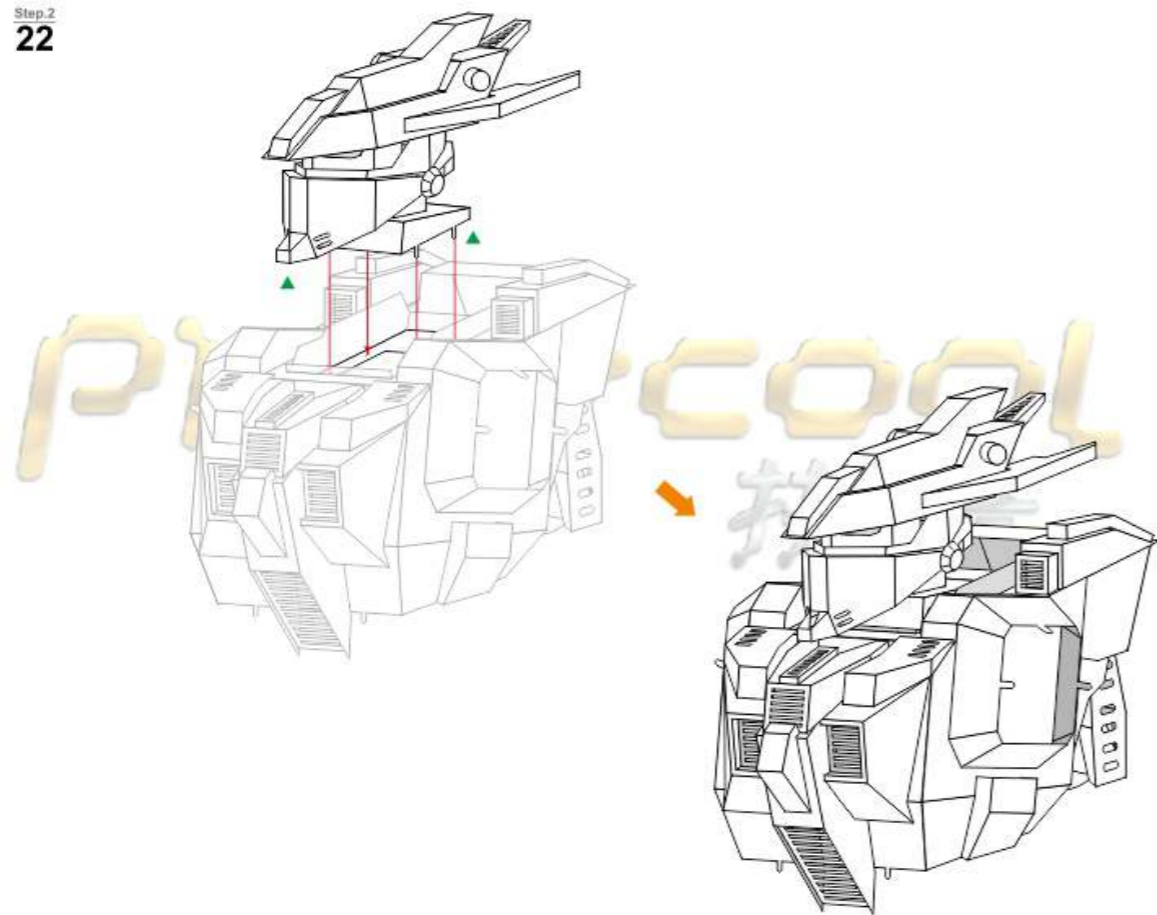
- 第12小步：零件编号H45
- 第13小步：零件编号E46,A47,E48,I49,I49
- 第14小步：零件编号C50,E50,F50,H51,I51,K51
- 第15小步：零件编号A52,B52,C52,E52,F52
- 第16小步：零件编号C53
- 第18小步：零件编号A54,C54,D54,E54,F54,H55,I55,I55,K55
- 第19小步：零件编号A56,E56,H57,I57,K57,I58,K58
- 第20小步：零件编号J59,C60
- 第21小步：零件编号I61



Step.2
01Step.2
02Step.2
03Step.2
04Step.2
05Step.2
06Step.2
07

Step.2
08Step.2
09Step.2
10Step.2
11Step.2
12Step.2
13

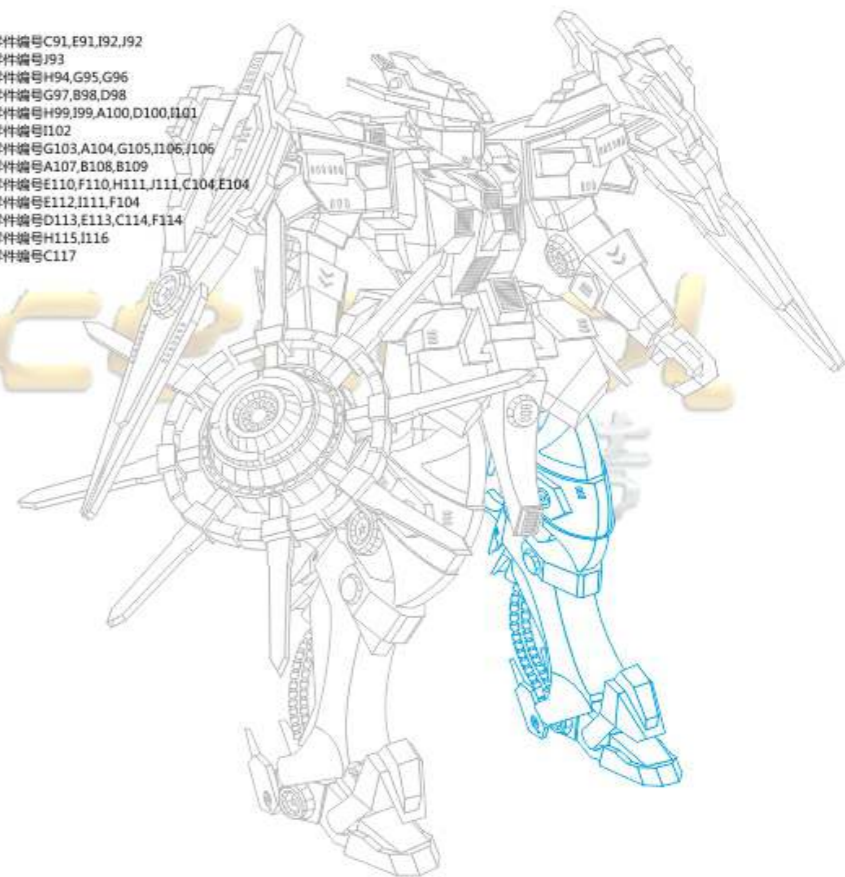
Step.2
14Step.2
15Step.2
16Step.2
17Step.2
18Step.2
19Step.2
20Step.2
21

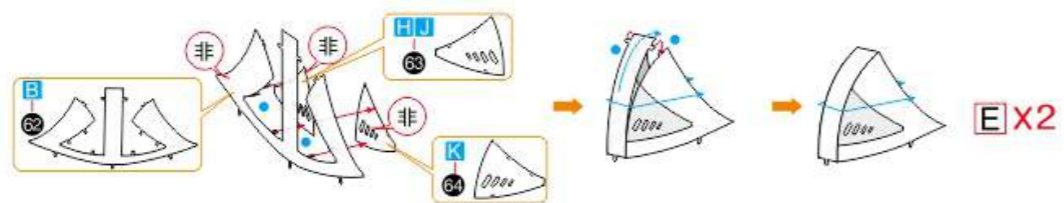
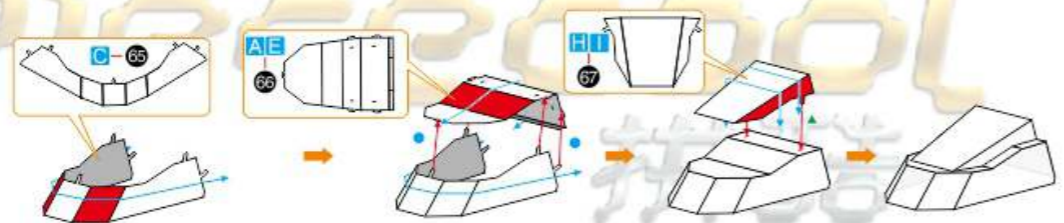
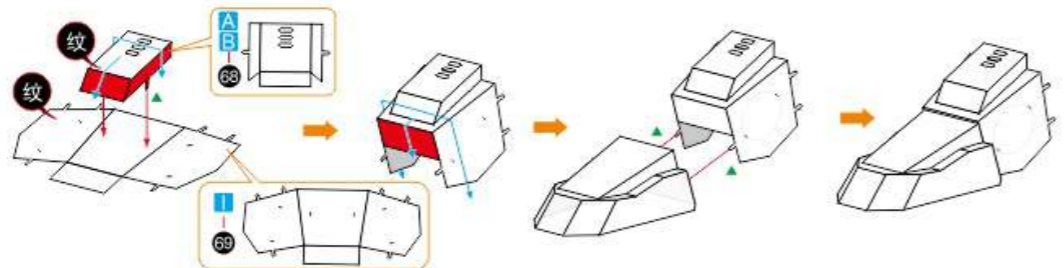
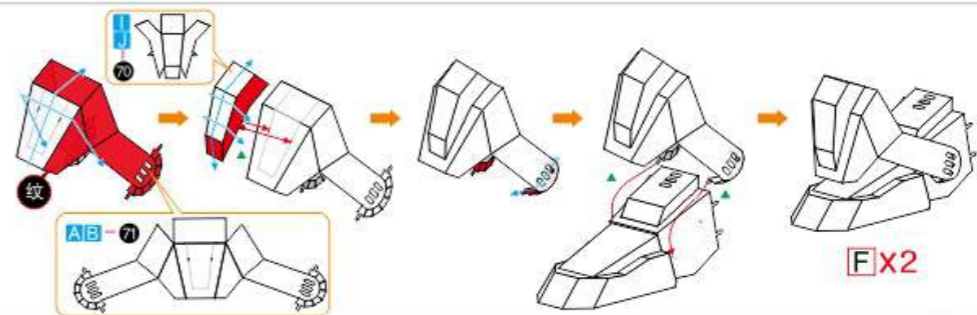
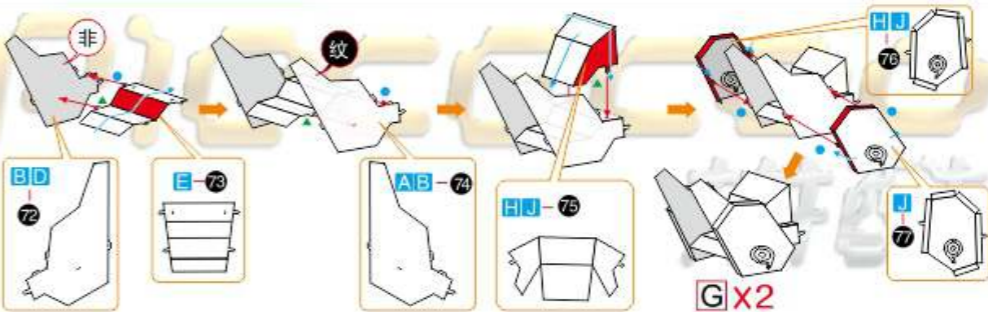
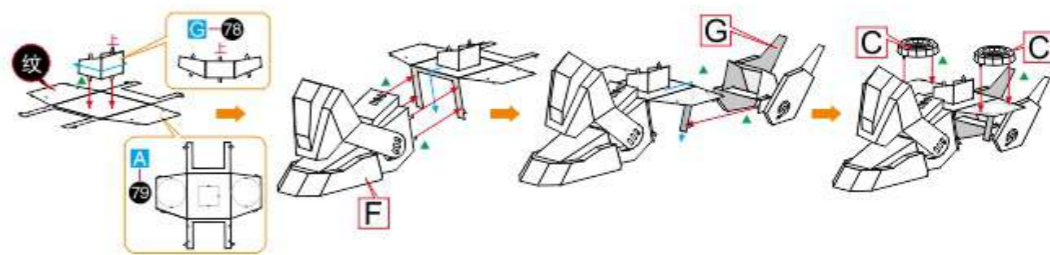
Step.2
22

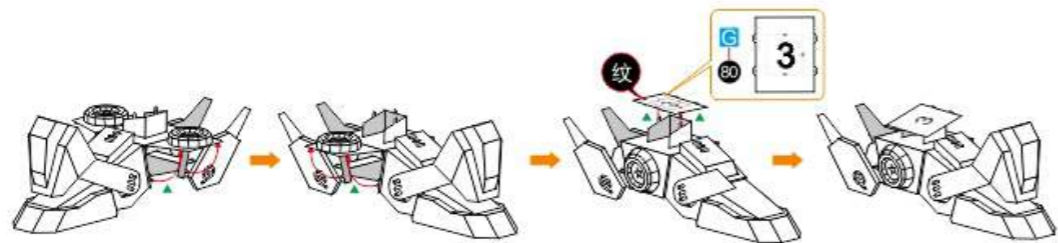
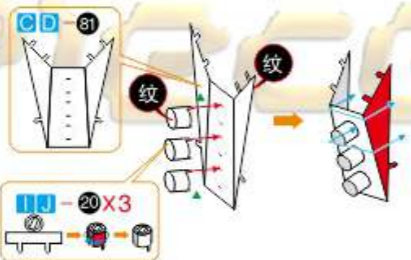
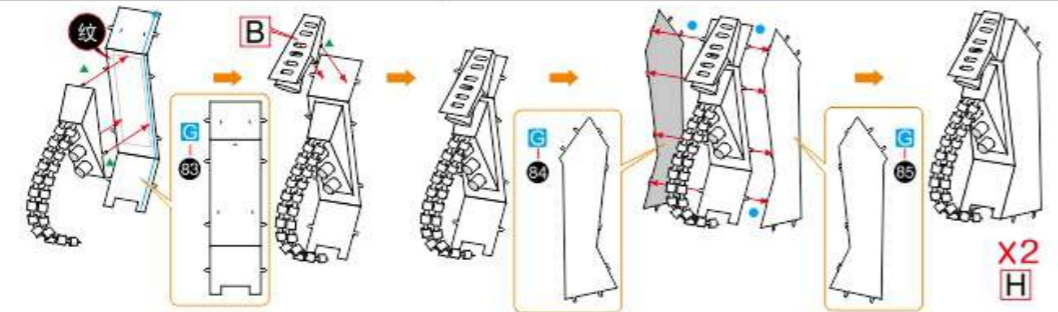
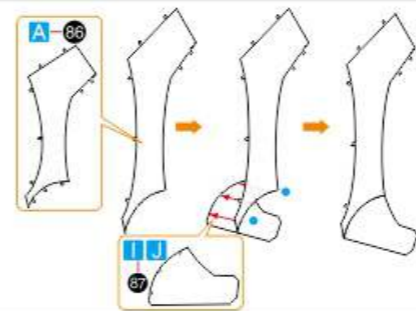
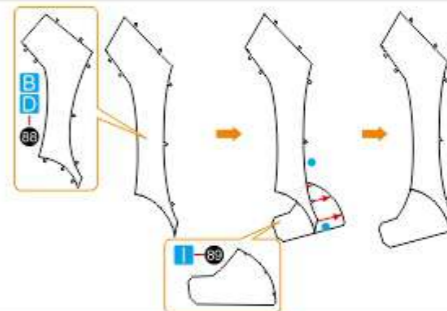
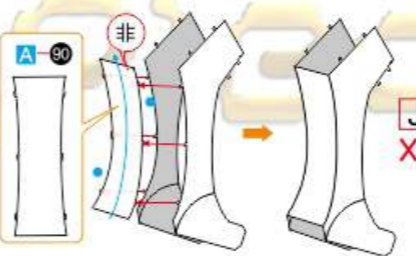
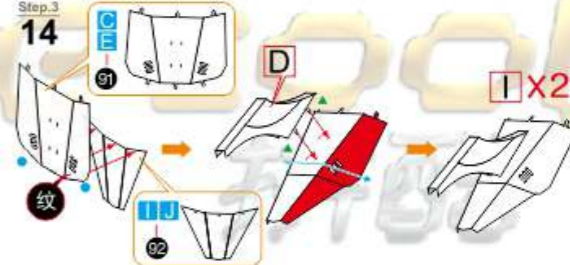
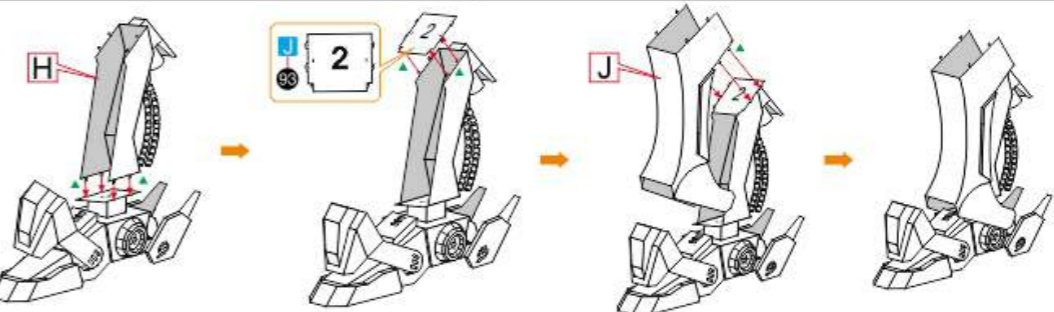
Step.3 左腿拼装

- 第01小步：零件编号B62,H63,J63,K64
- 第02小步：零件编号C65,A66,E66,H67,I67
- 第03小步：零件编号A68,B68,I69
- 第04小步：零件编号I70,J70,A71,B71
- 第05小步：零件编号B72,D72,E73,A74,B74,H75,I75,H76,J76,J77
- 第06小步：零件编号G78,A79
- 第07小步：零件编号G80
- 第08小步：零件编号C81,D81,I20,I20
- 第09小步：零件编号E82
- 第10小步：零件编号G83,G84,G85
- 第11小步：零件编号A86,I87,J87
- 第12小步：零件编号B88,D88,I89
- 第13小步：零件编号A90

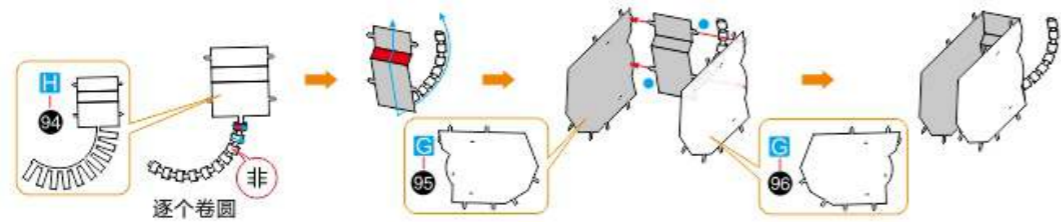
- 第14小步：零件编号C91,E91,I92,I92
- 第15小步：零件编号J93
- 第16小步：零件编号H94,G95,G96
- 第17小步：零件编号G97,B98,D98
- 第18小步：零件编号H99,I99,A100,D100,I101
- 第20小步：零件编号I102
- 第21小步：零件编号G103,A104,G105,I106,J106
- 第22小步：零件编号A107,B108,B109
- 第23小步：零件编号E110,F110,H111,I111,C104,E104
- 第24小步：零件编号E112,I111,F104
- 第25小步：零件编号D113,E113,C114,F114
- 第26小步：零件编号H115,I116
- 第27小步：零件编号C117



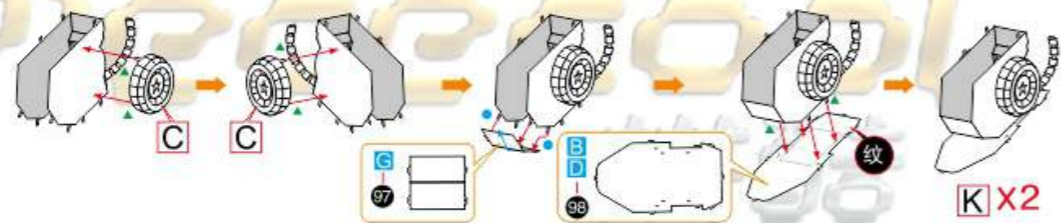
Step.3
01Step.3
02Step.3
03Step.3
04Step.3
05Step.3
06

Step.3
07Step.3
08Step.3
09Step.3
10Step.3
11Step.3
12Step.3
13Step.3
14Step.3
15

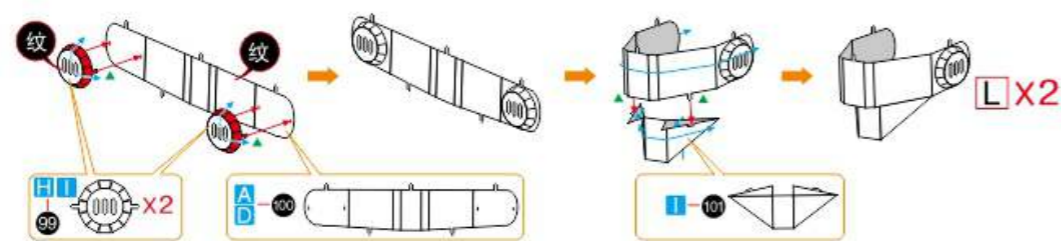
Step.3
16



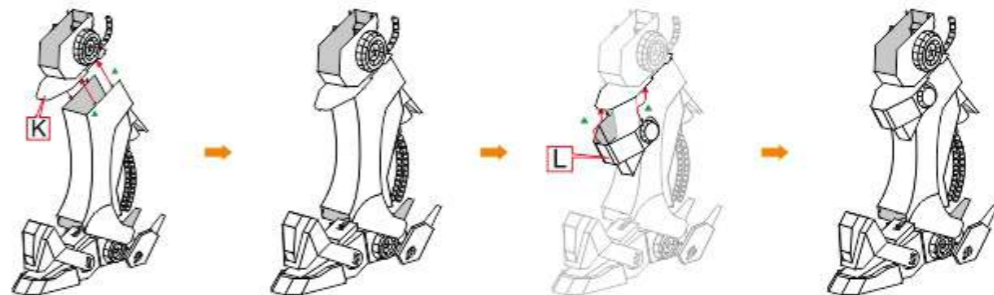
Step.3
17



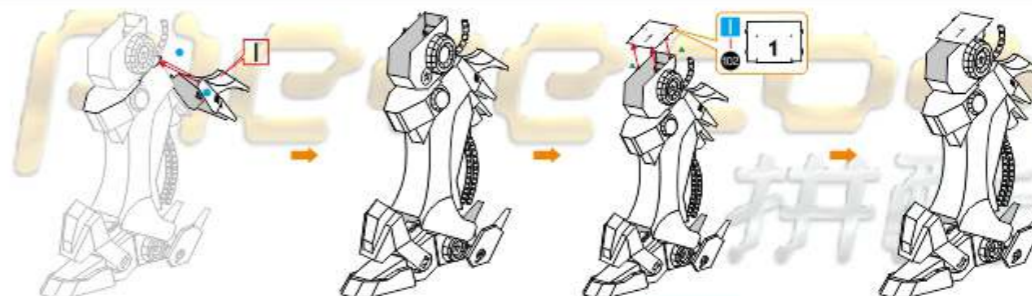
Step.3
18



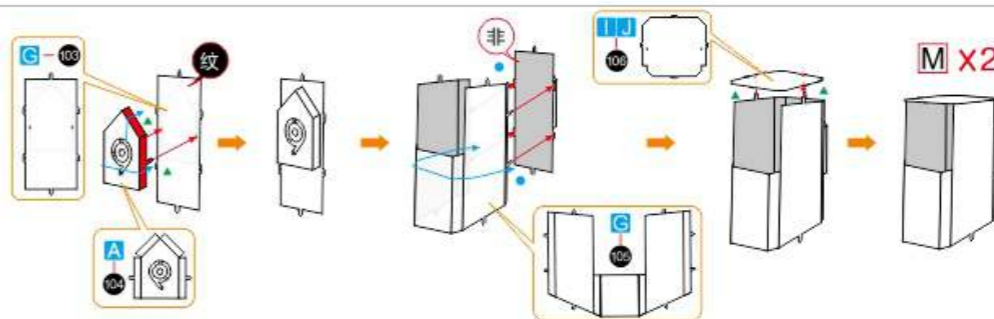
Step.3
19



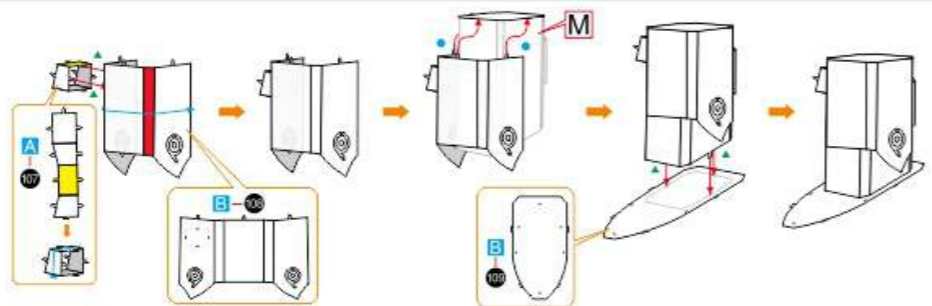
Step.3
20



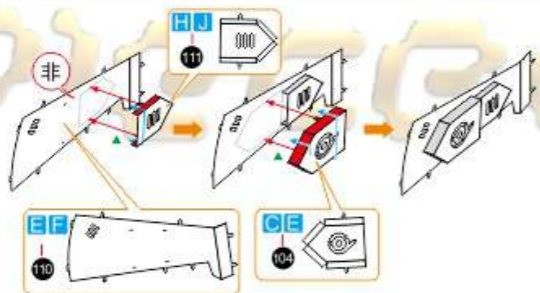
Step.3
21



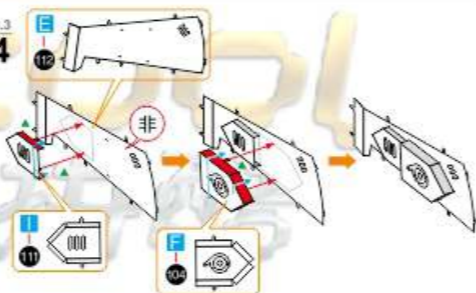
Step.3
22



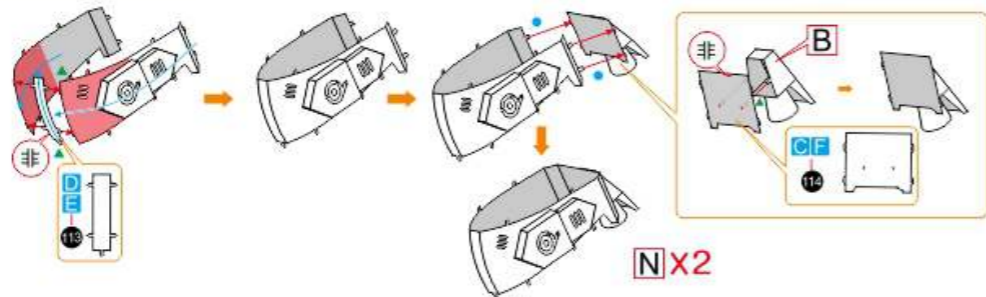
Step.3
23



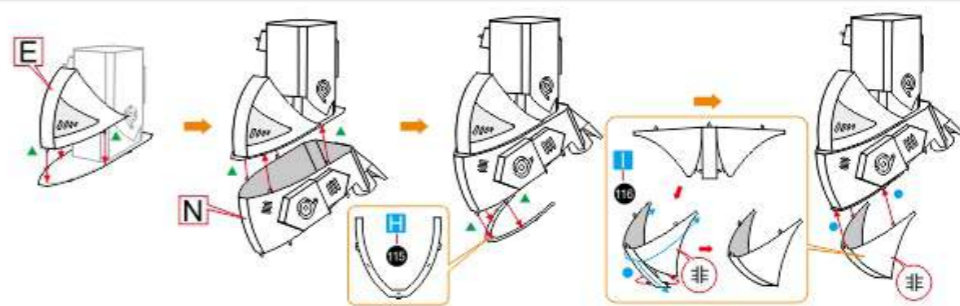
Step.3
24



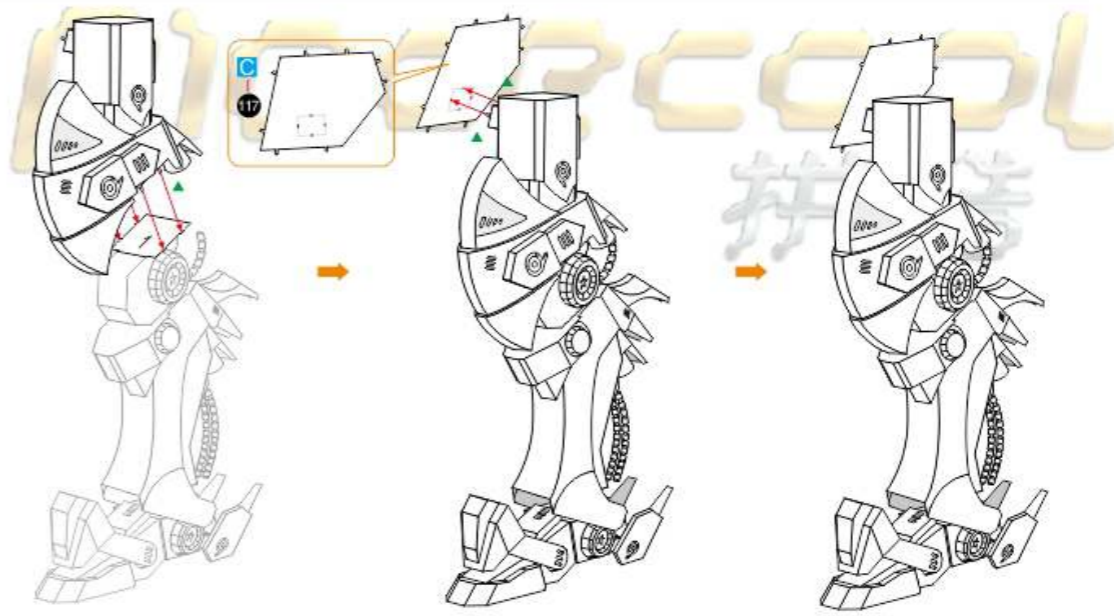
Step.3
25



Step.3
26



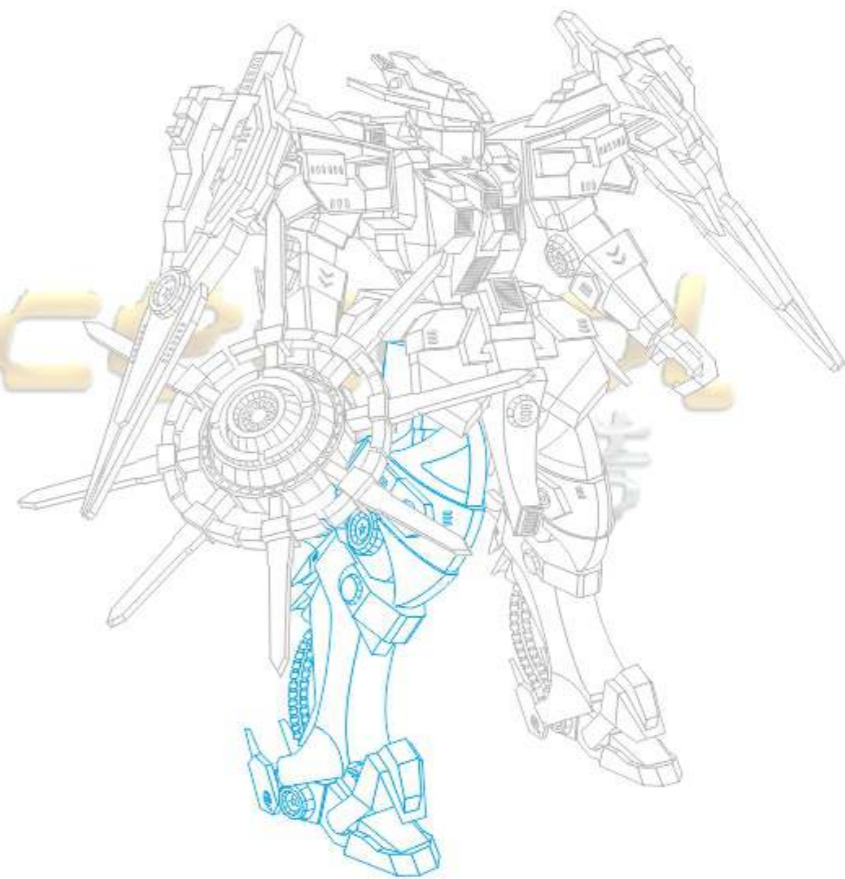
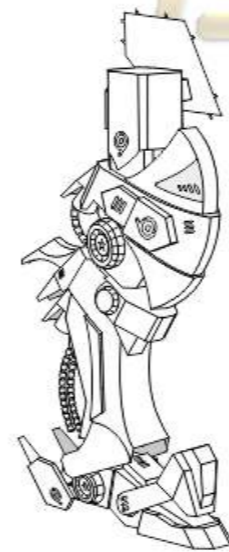
Step.3
27



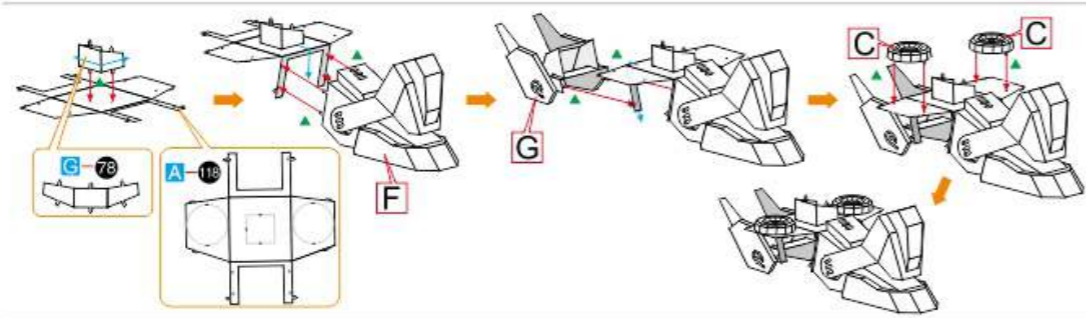
PIECECOOL
拼酷

Step.4 右腿拼装

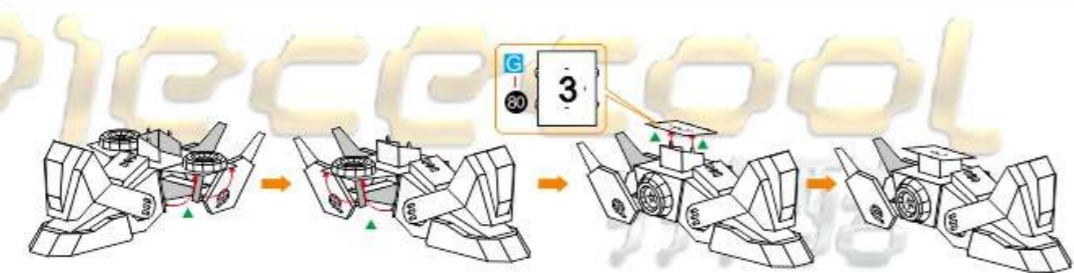
- 第01小步：零件编号G78,A118
- 第02小步：零件编号G80
- 第03小步：零件编号J93
- 第05小步：零件编号J102
- 第06小步：零件编号A119,D107,C109
- 第07小步：零件编号J115,J116
- 第08小步：零件编号B120
- 第09小步：零件编号C121,J122



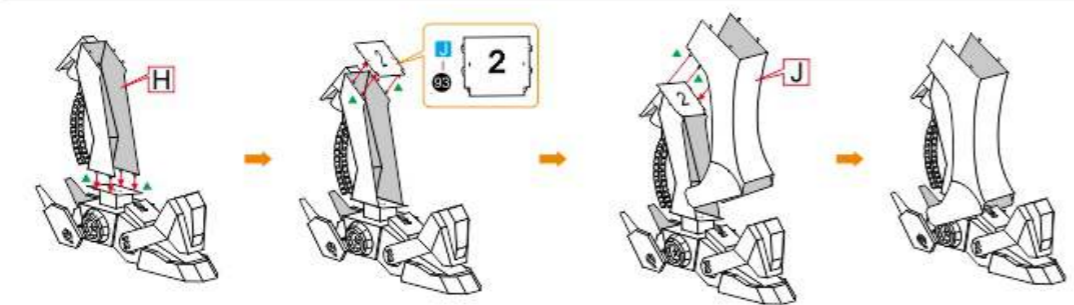
Step.4
01



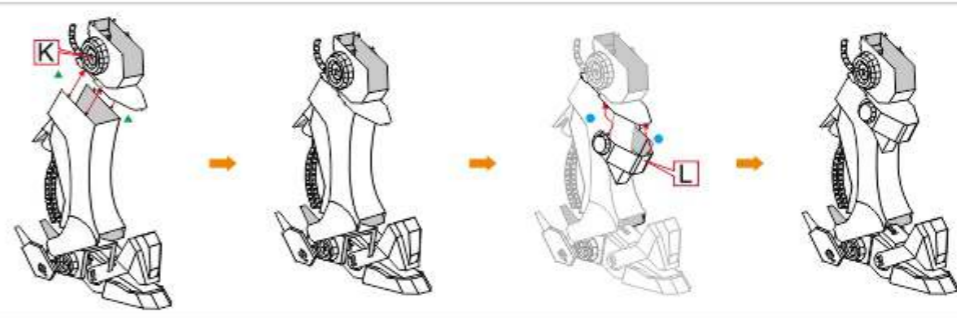
Step.4
02



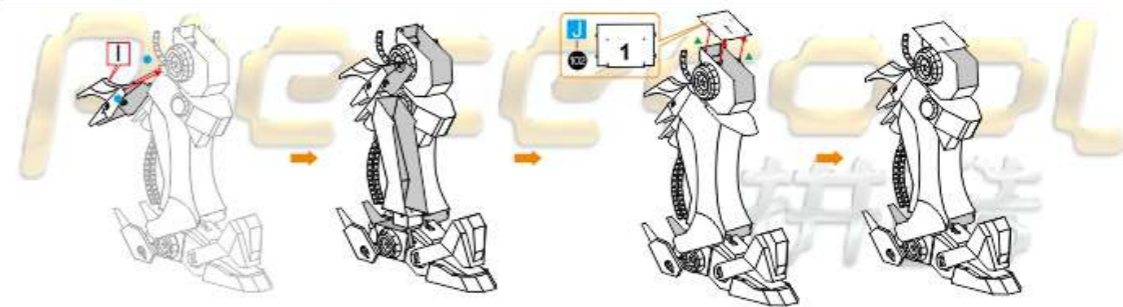
Step.4
03



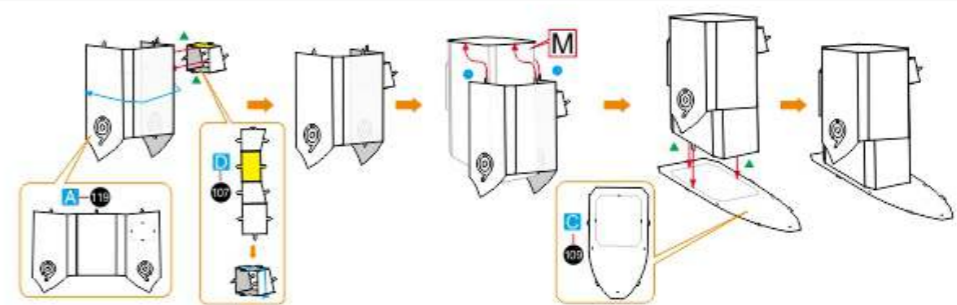
Step.4
04



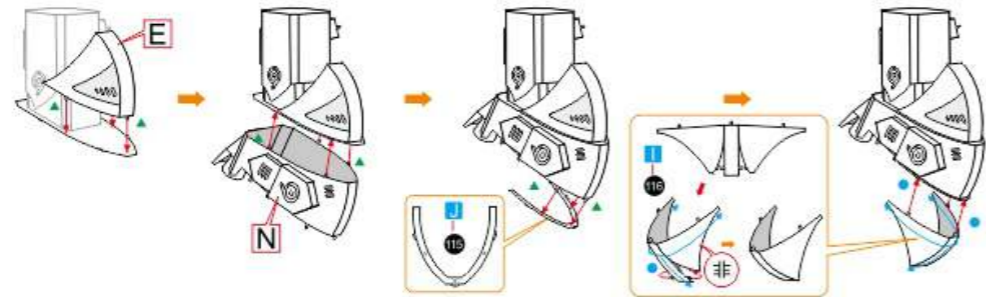
Step.4
05



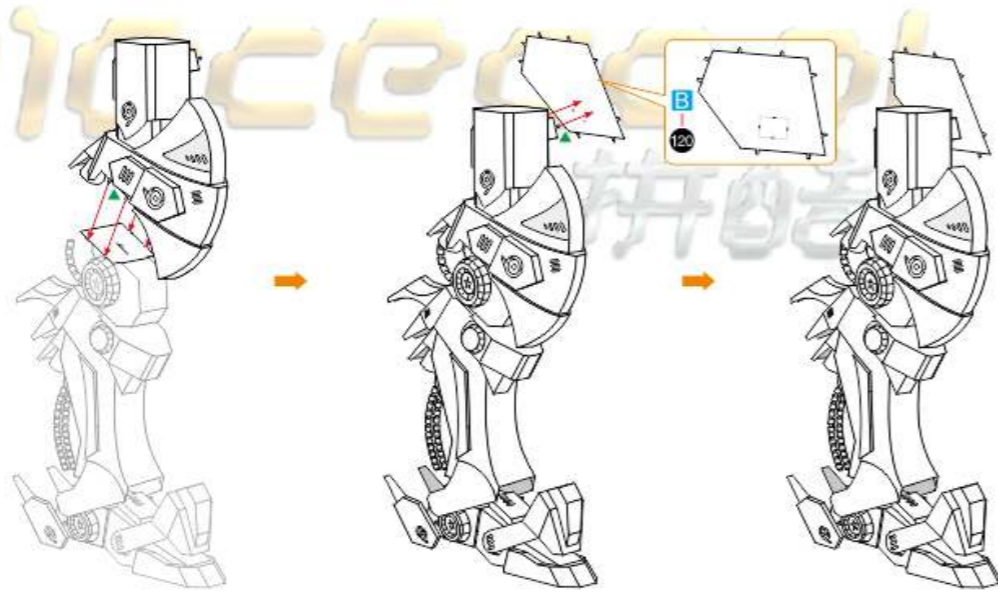
Step.4
06



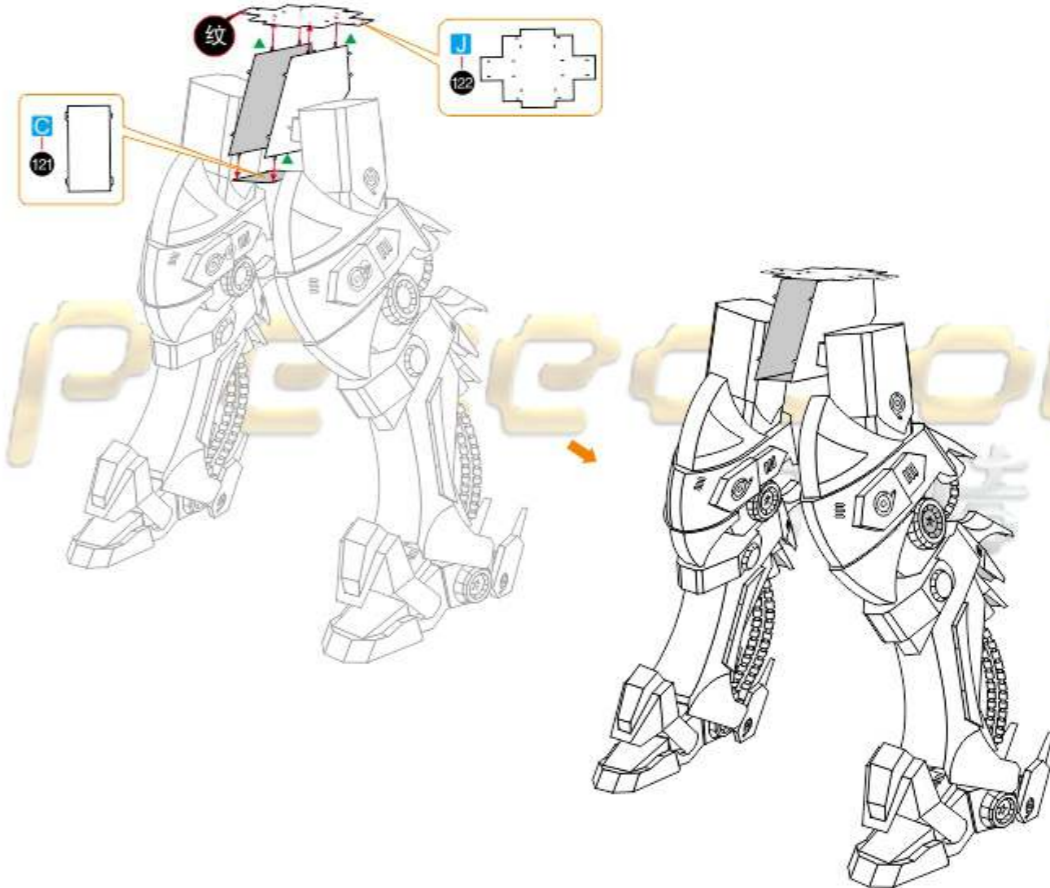
Step.4
07



Step.4
08



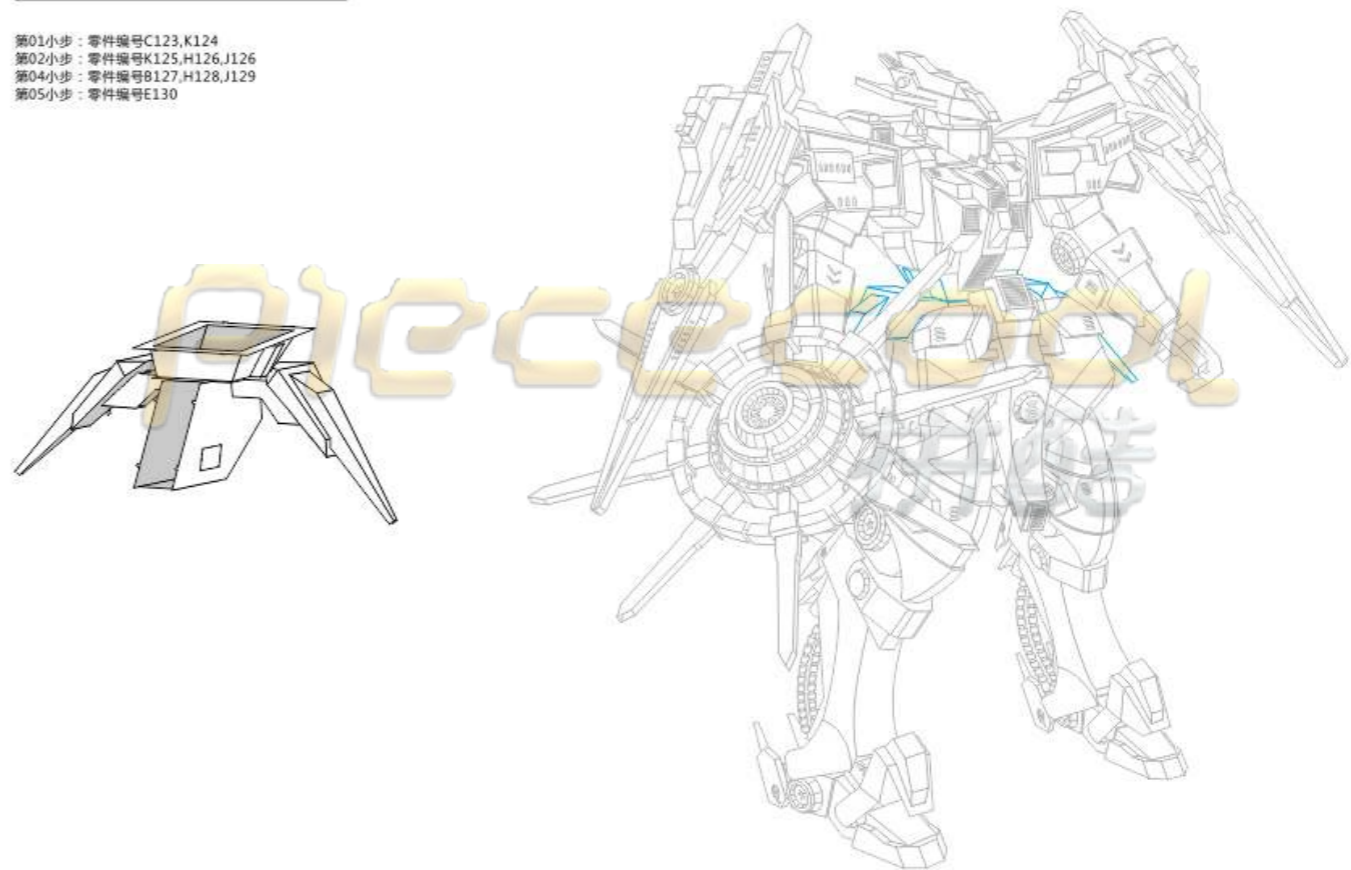
Step.4
09

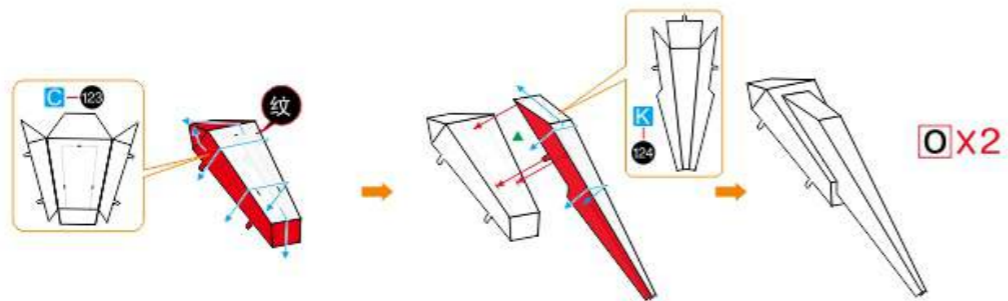
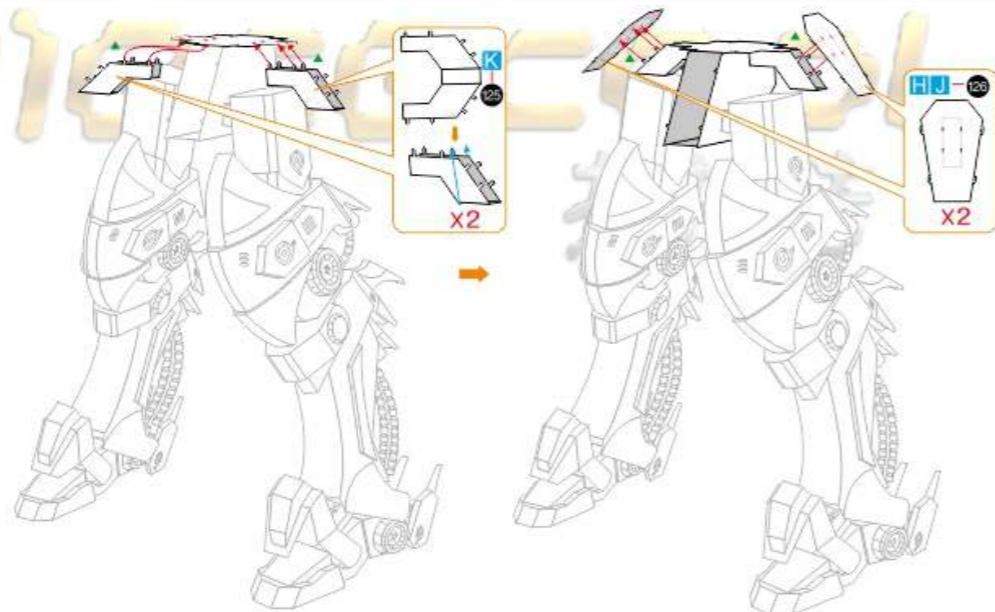
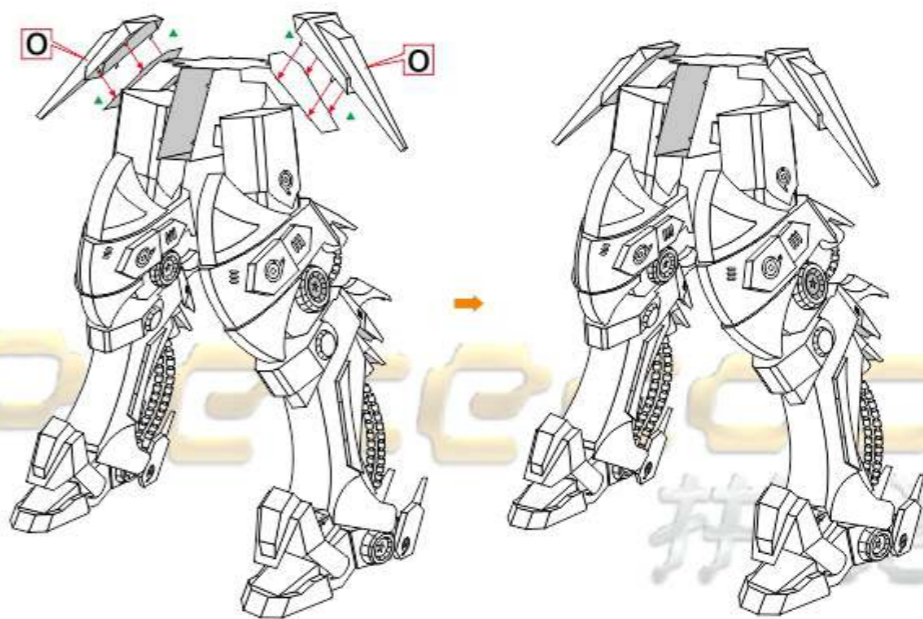
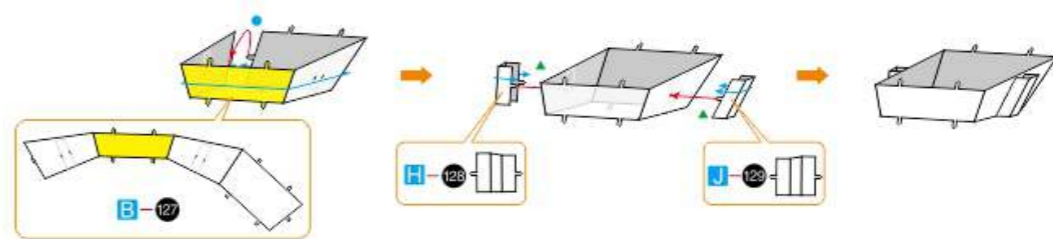


piececool 拼酷

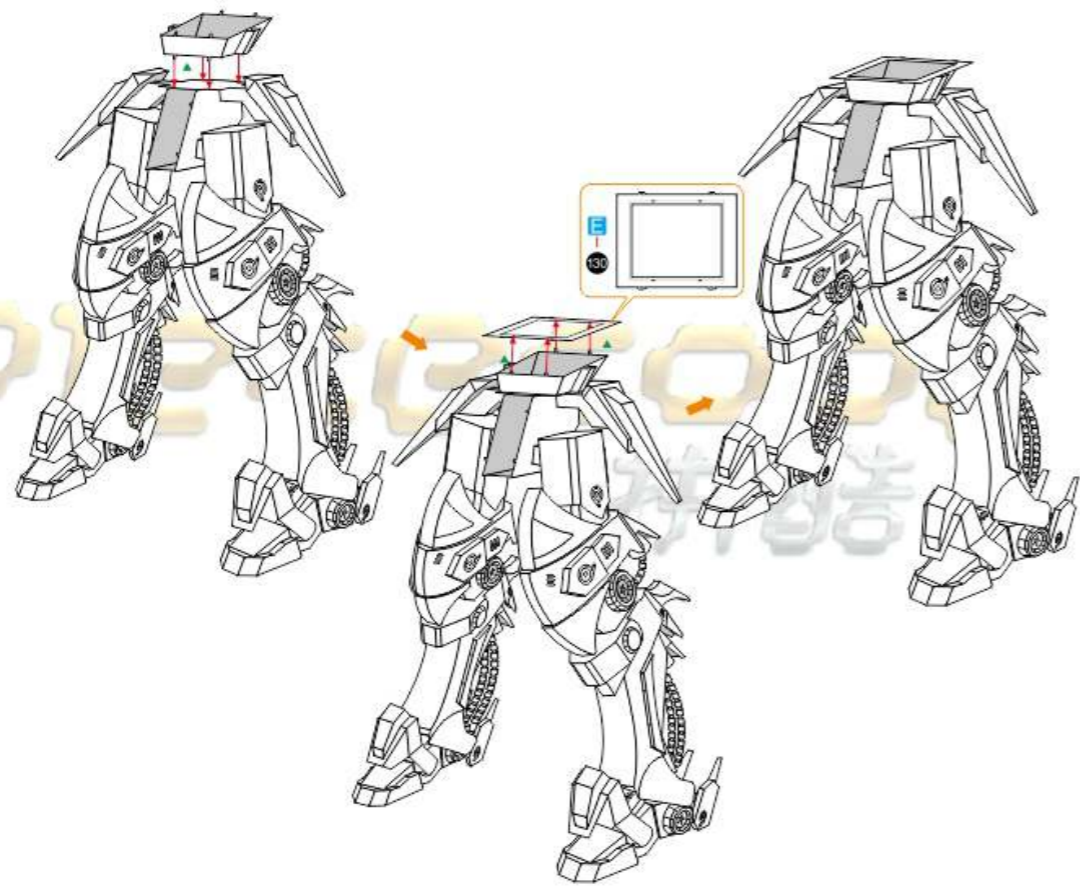
Step.5 腰部拼装

第01小步：零件编号C123,K124
第02小步：零件编号K125,H126,J126
第04小步：零件编号B127,H128,J129
第05小步：零件编号E130



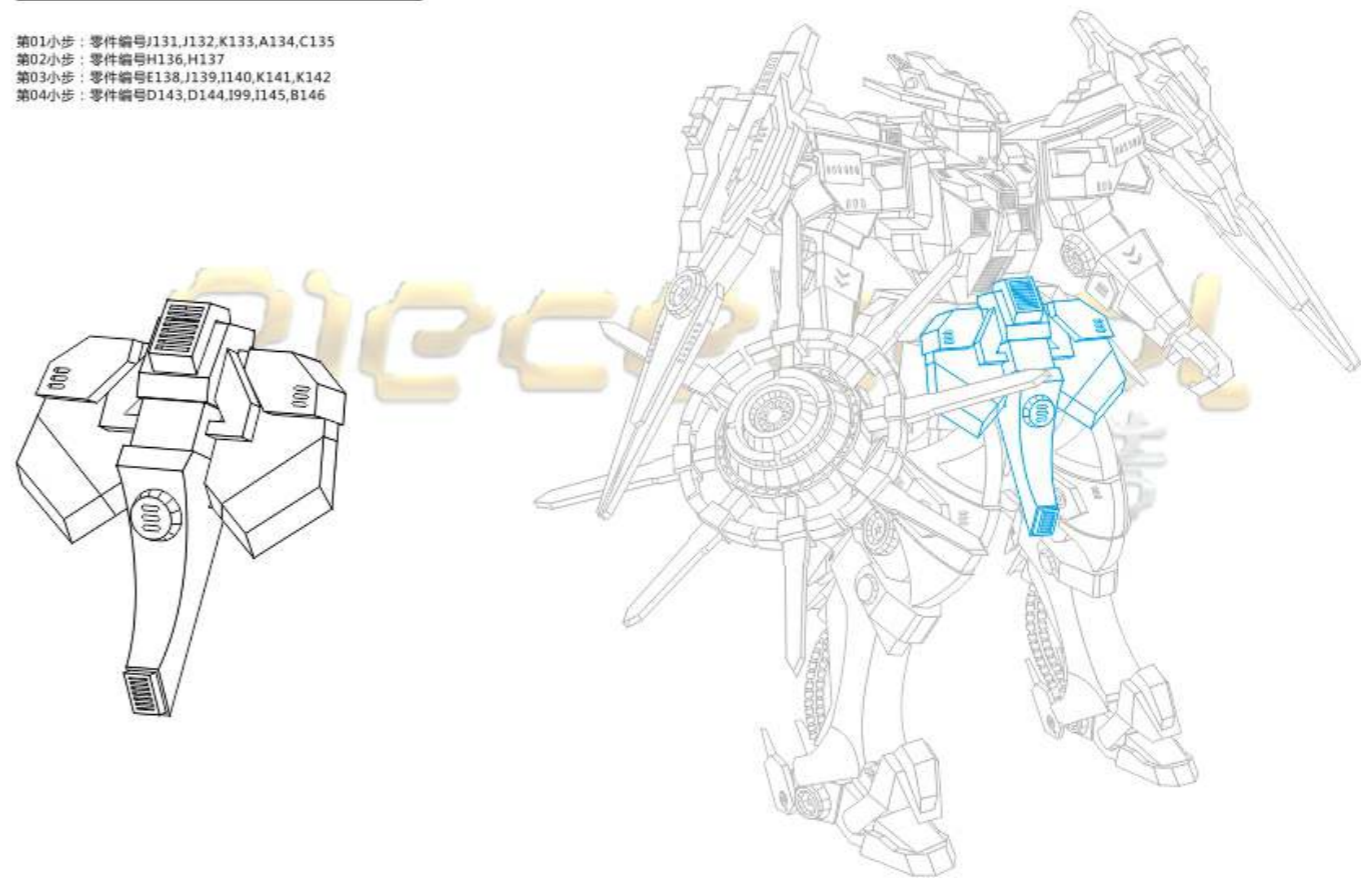
Step.5
01Step.5
02Step.5
03Step.5
04

Step.5
05

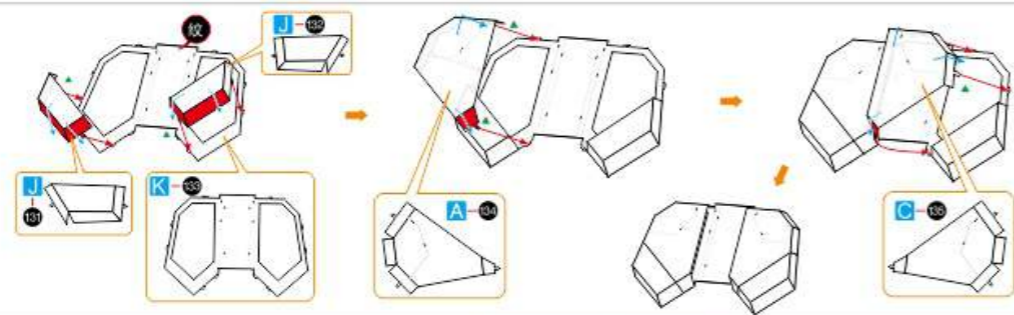


Step.6 前面装备拼装

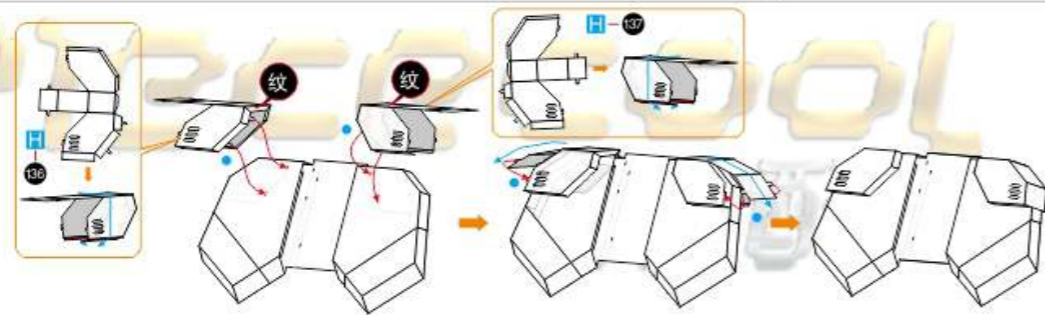
- 第01小步：零件编号J131,J132,K133,A134,C135
- 第02小步：零件编号H136,H137
- 第03小步：零件编号E138,J139,I140,K141,K142
- 第04小步：零件编号D143,D144,I99,I145,B146



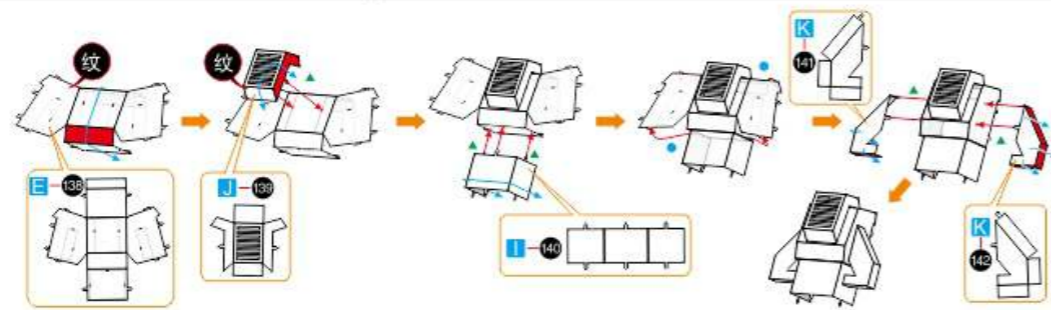
Step.6
01



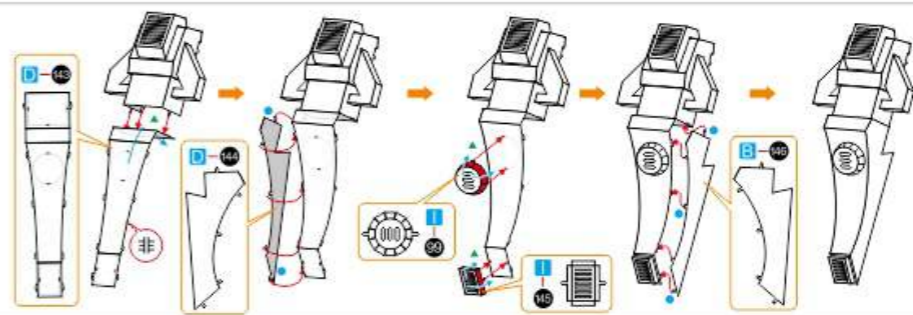
Step.6
02



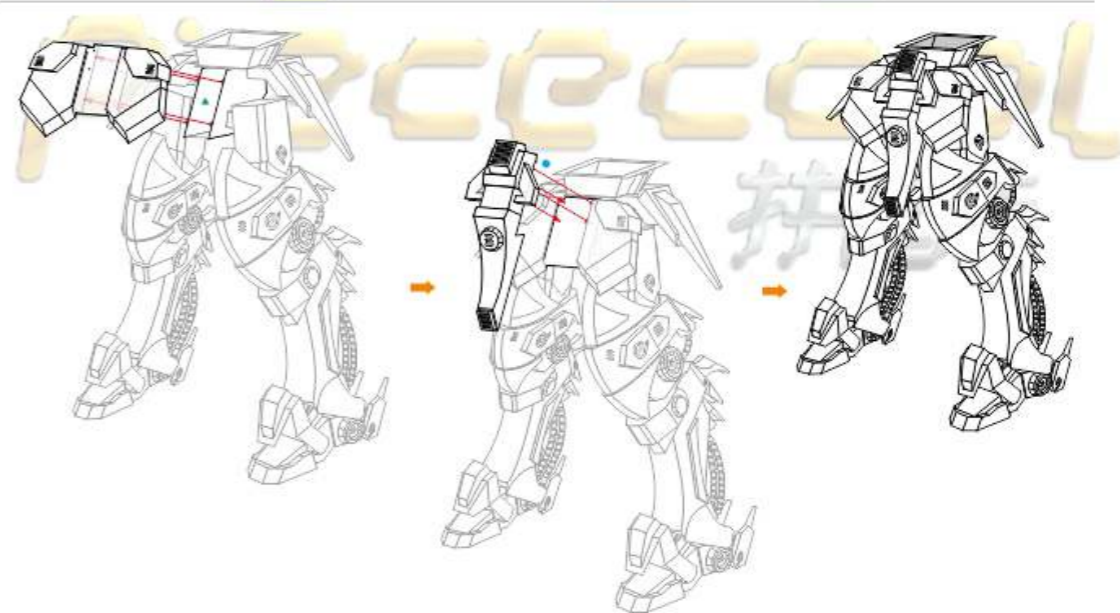
Step.6
03



Step.6
04



Step.6
05

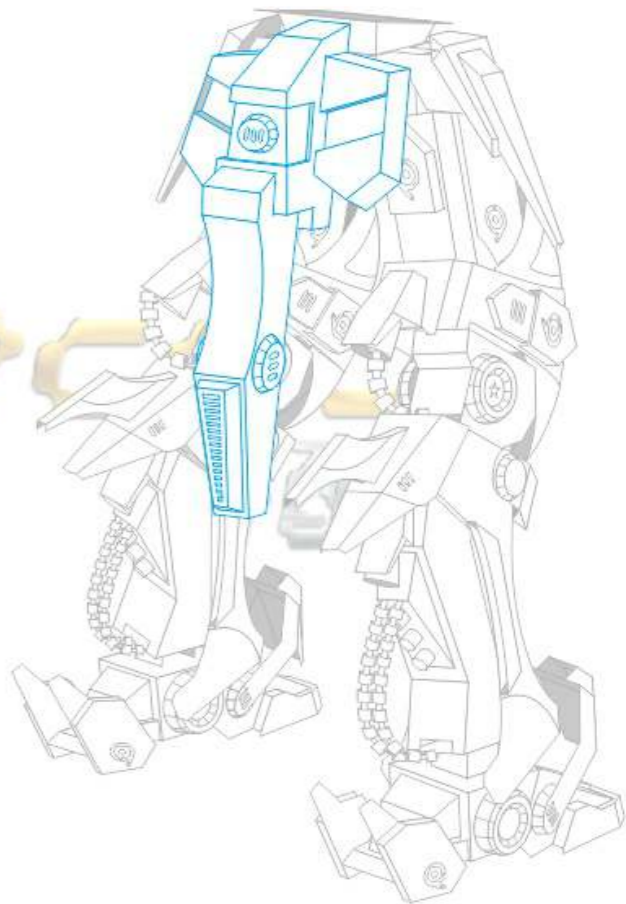
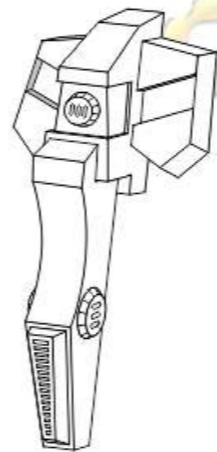


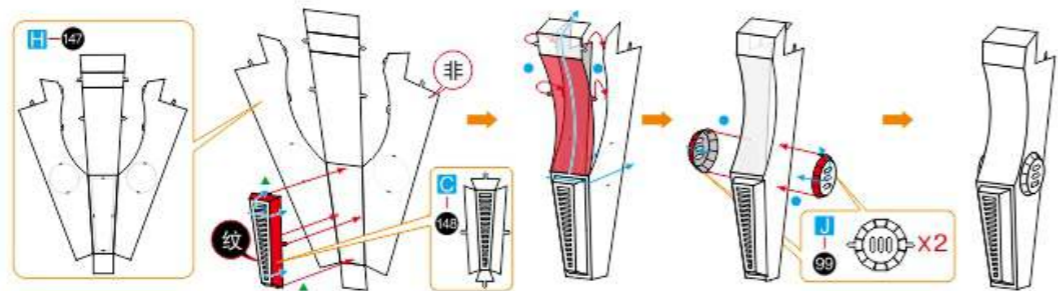
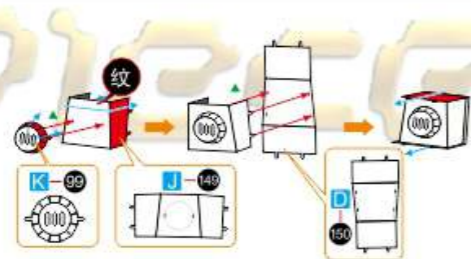
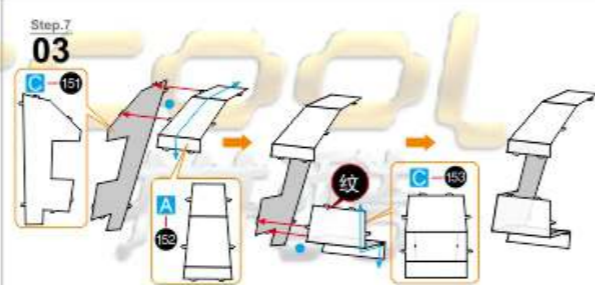
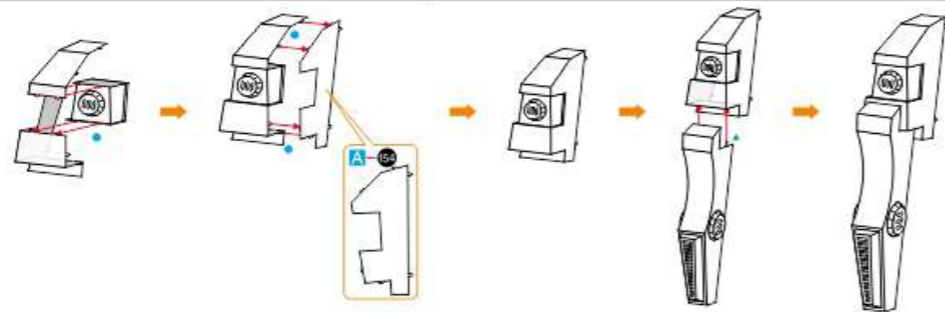
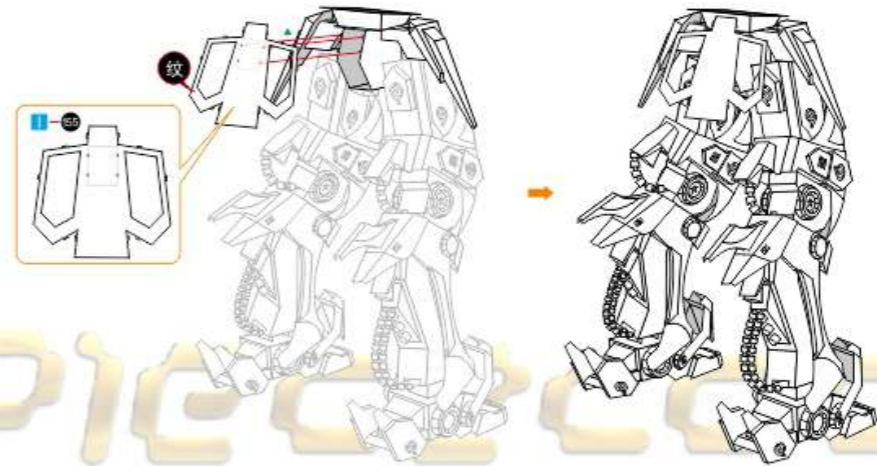
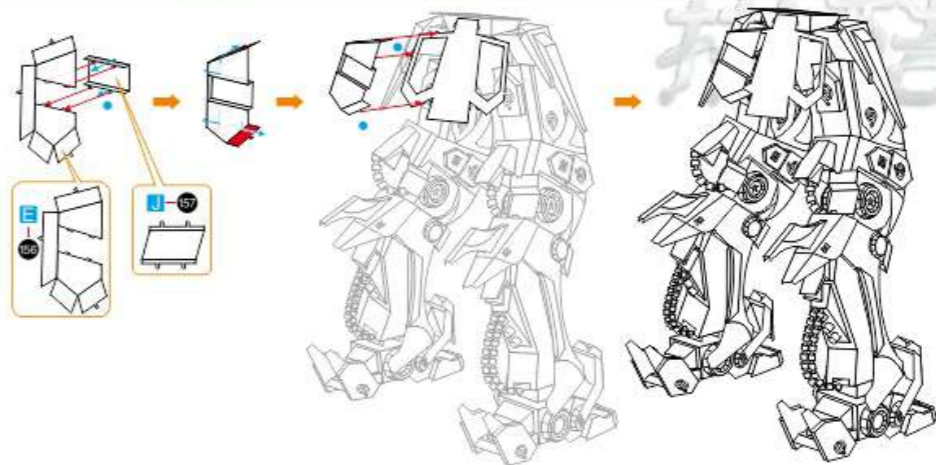
PIECECOOL

拼酷

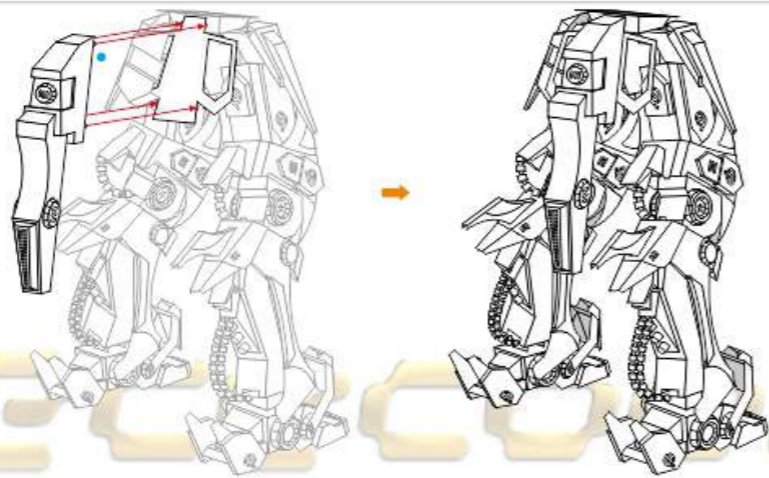
Step.7 后面装备拼装

- 第01小步：零件编号H147,C148,J99
- 第02小步：零件编号K99,J149,D150
- 第03小步：零件编号C151,A152,C153
- 第04小步：零件编号A154
- 第05小步：零件编号I155
- 第06小步：零件编号E156,J157
- 第08小步：零件编号I158,C159

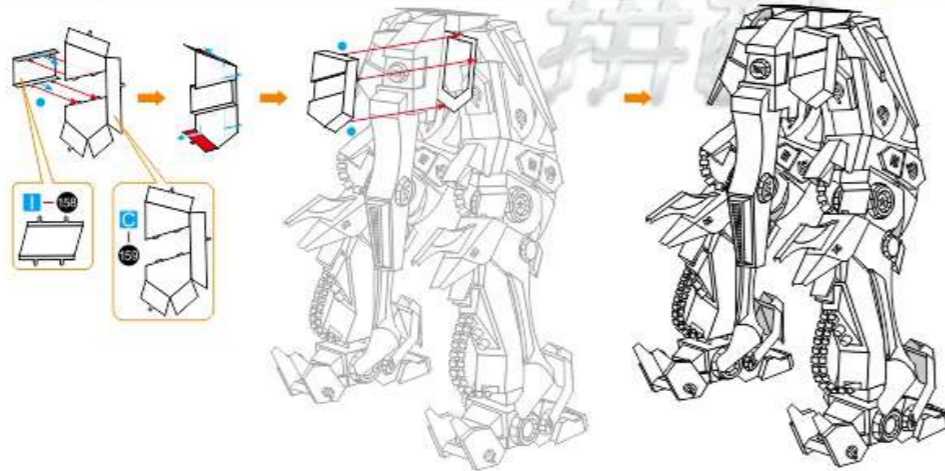


Step.7
01Step.7
02Step.7
03Step.7
04Step.7
05Step.7
06

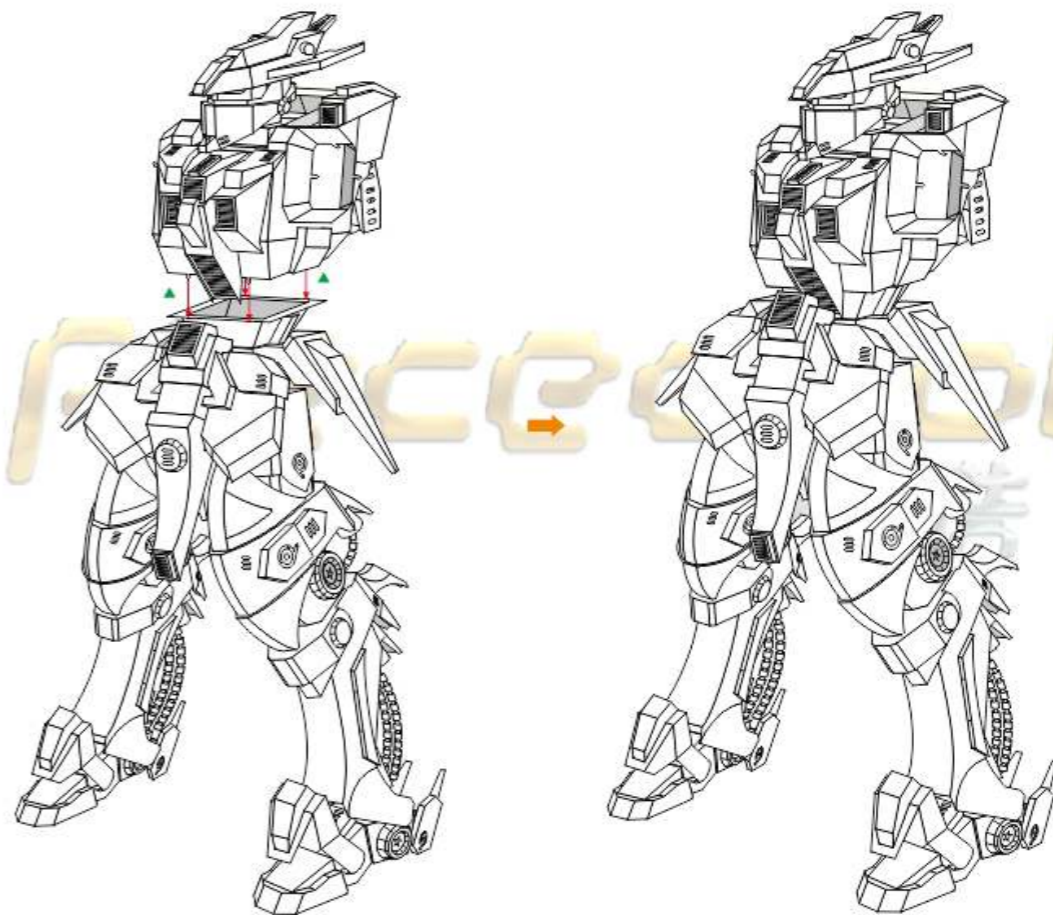
Step.7
07



Step.7
08



Step.7
09



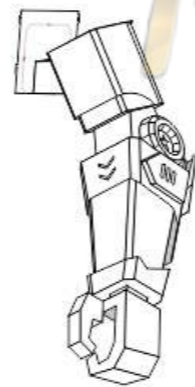
Step.7
后面装备拼装

Step.7
后面装备拼装

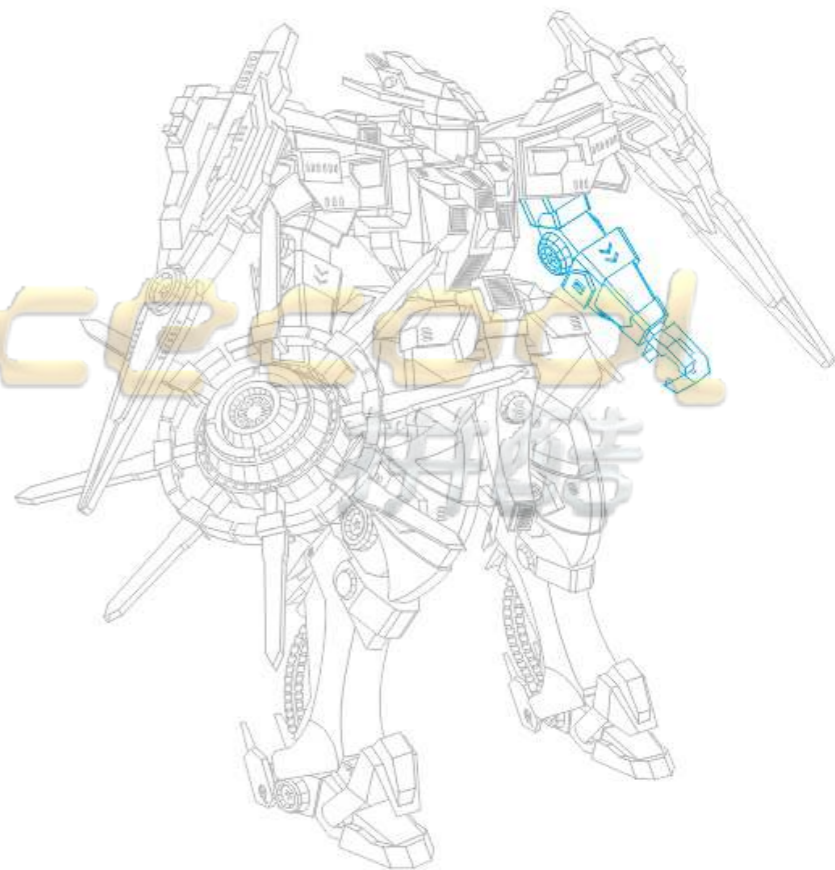
Piececool
拼酷

Step.8 左臂拼装

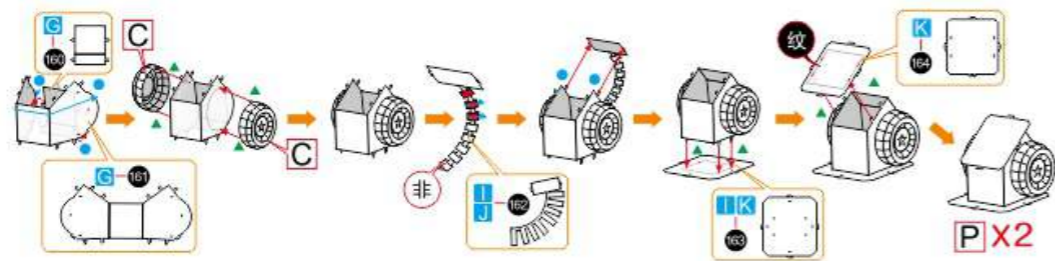
- 第01小步：零件编号G160,G161,I162,J162,I163,K163,K164
- 第02小步：零件编号G165,H166,K166
- 第03小步：零件编号D167,B168
- 第04小步：零件编号G169
- 第05小步：零件编号B170,J111
- 第07小步：零件编号K171,I172,I173,J174
- 第08小步：零件编号I175
- 第09小步：零件编号H176



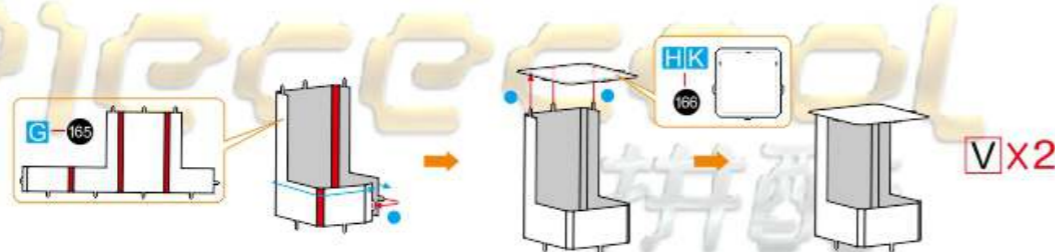
Piececool
拼酷



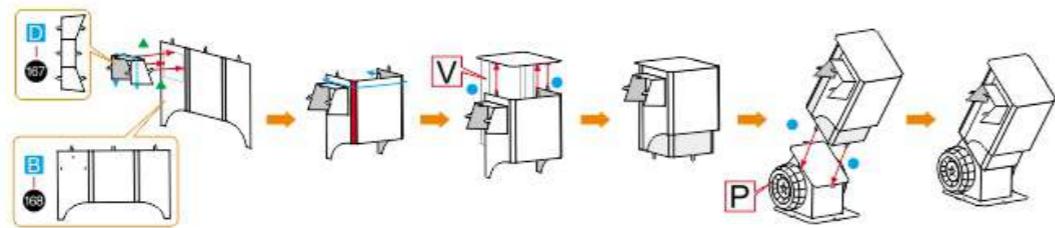
Step.8
01



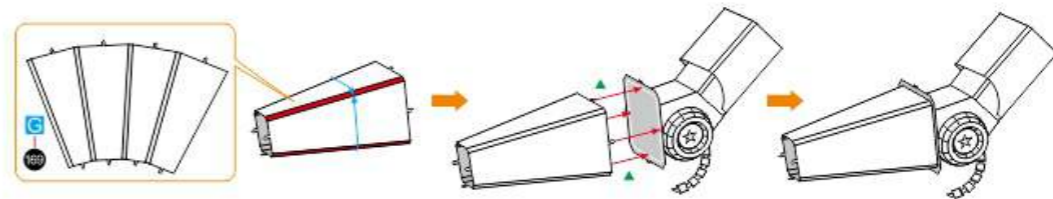
Step.8
02



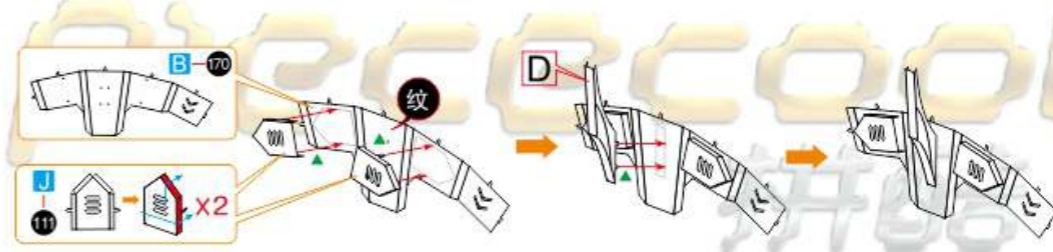
Step.8
03



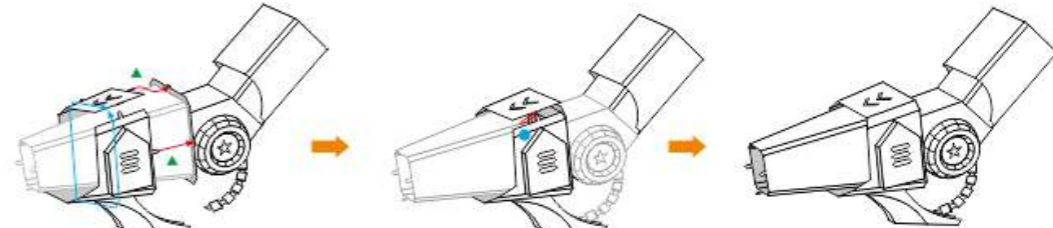
Step.8
04



Step.8
05



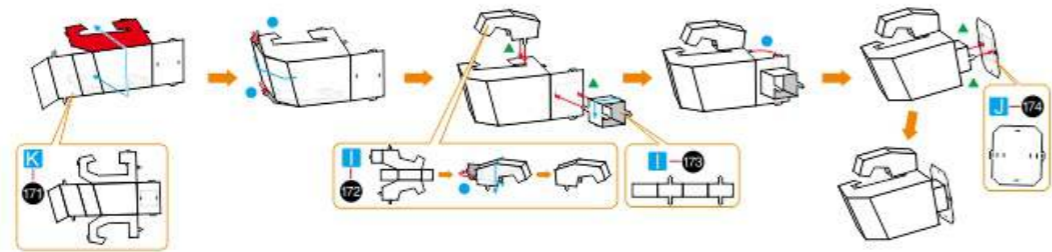
Step.8
06



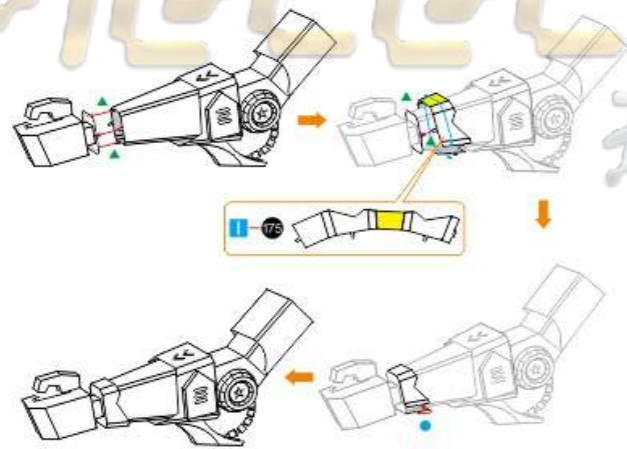
Step.8
左端拼装

Step.8
左端拼装

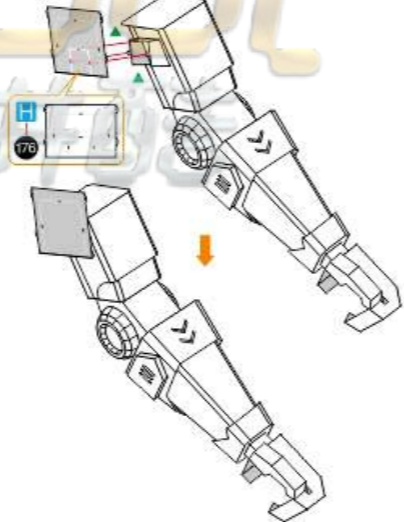
Step.8
07



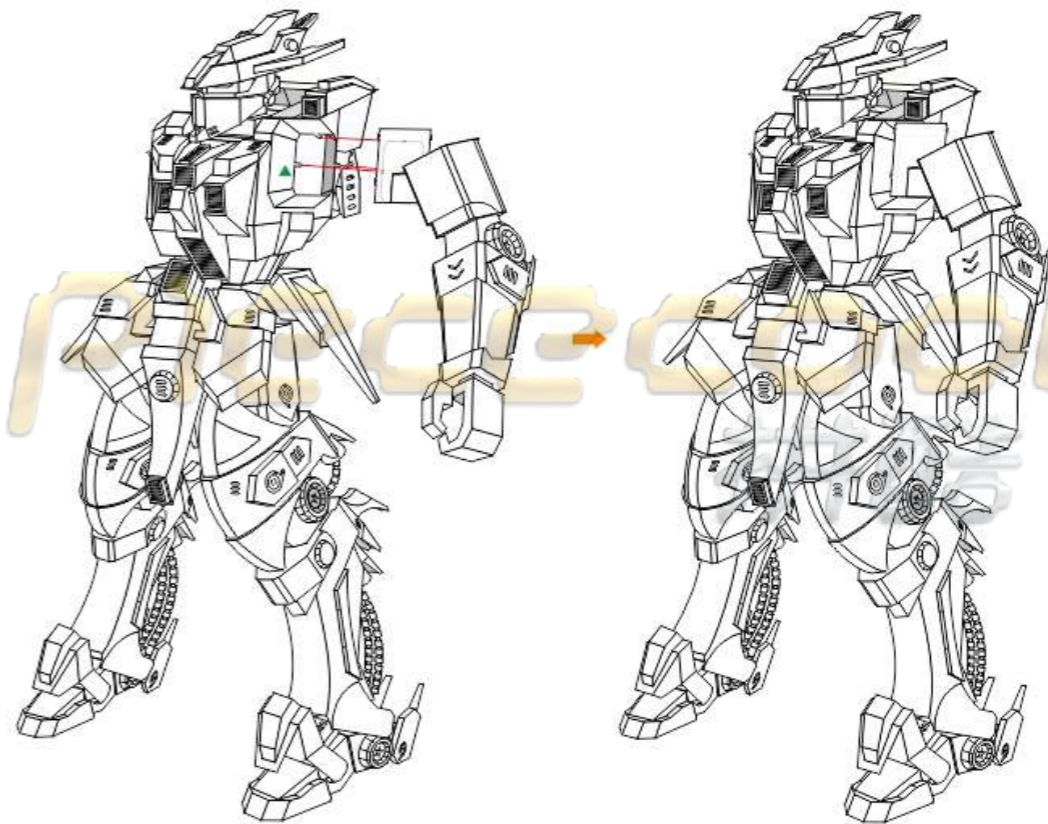
Step.8
08



Step.8
09



Step.8
10

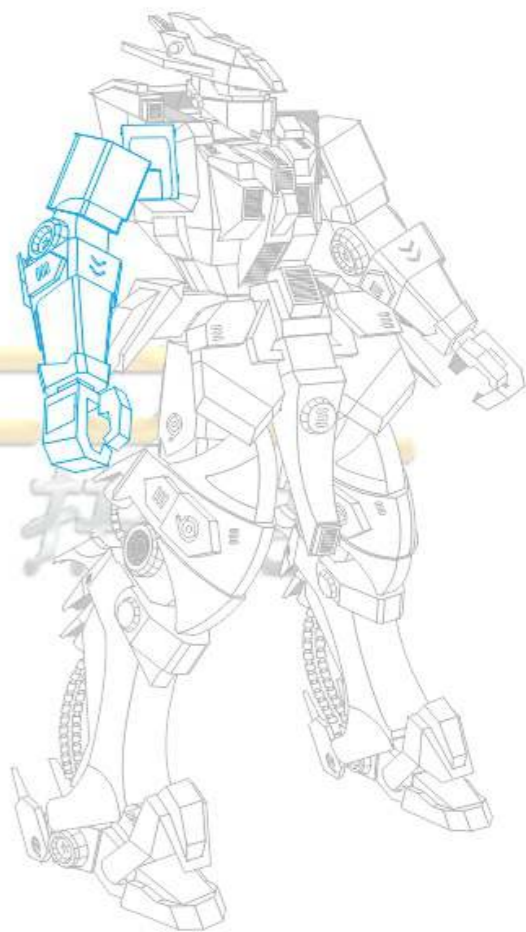
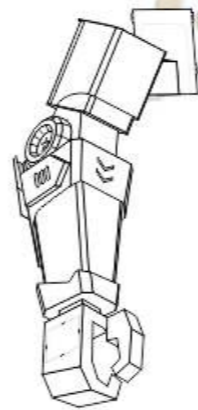


Step.8
左臂拼装

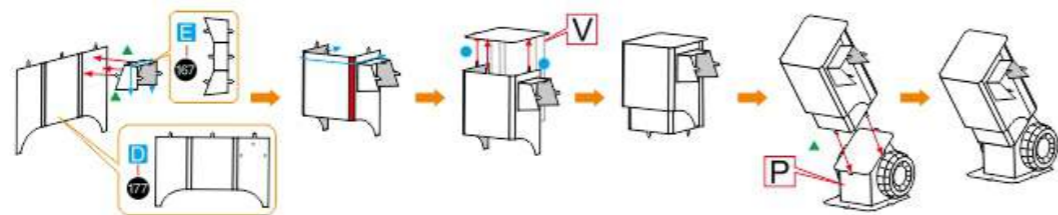
PIECECOOL
拼酷

Step.9 右臂拼装

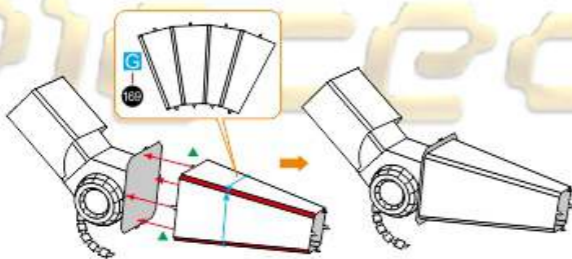
第01小步：零件编号E167,D177
第02小步：零件编号G169
第03小步：零件编号H111,J111,D178
第05小步：零件编号K179,K172,J173,J174
第06小步：零件编号H180
第07小步：零件编号H176



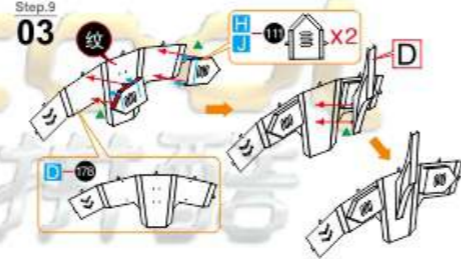
Step.9
01



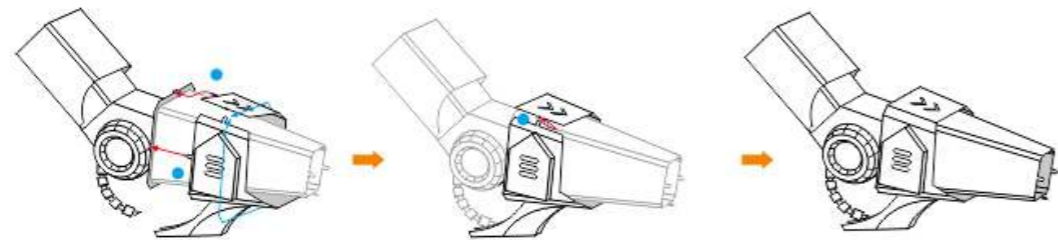
Step.9
02



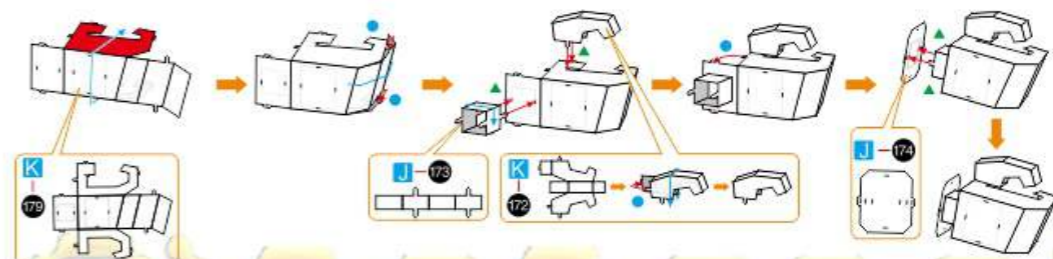
Step.9
03



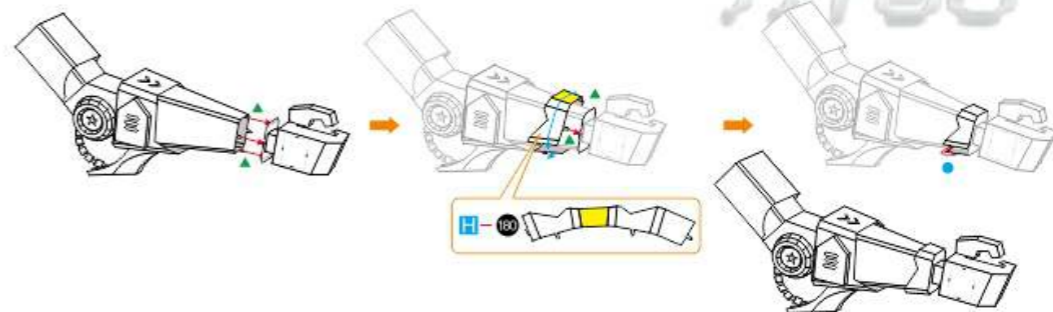
Step.9
04



Step.9
05



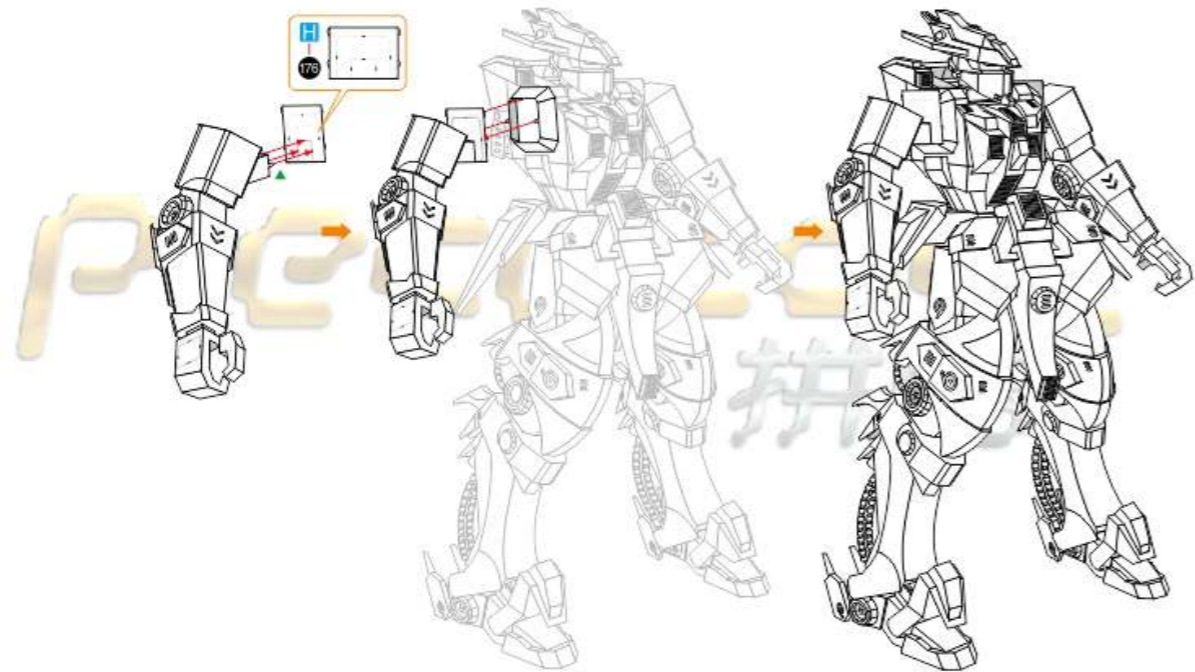
Step.9
06



Step.9
右端拼装
右端拼装

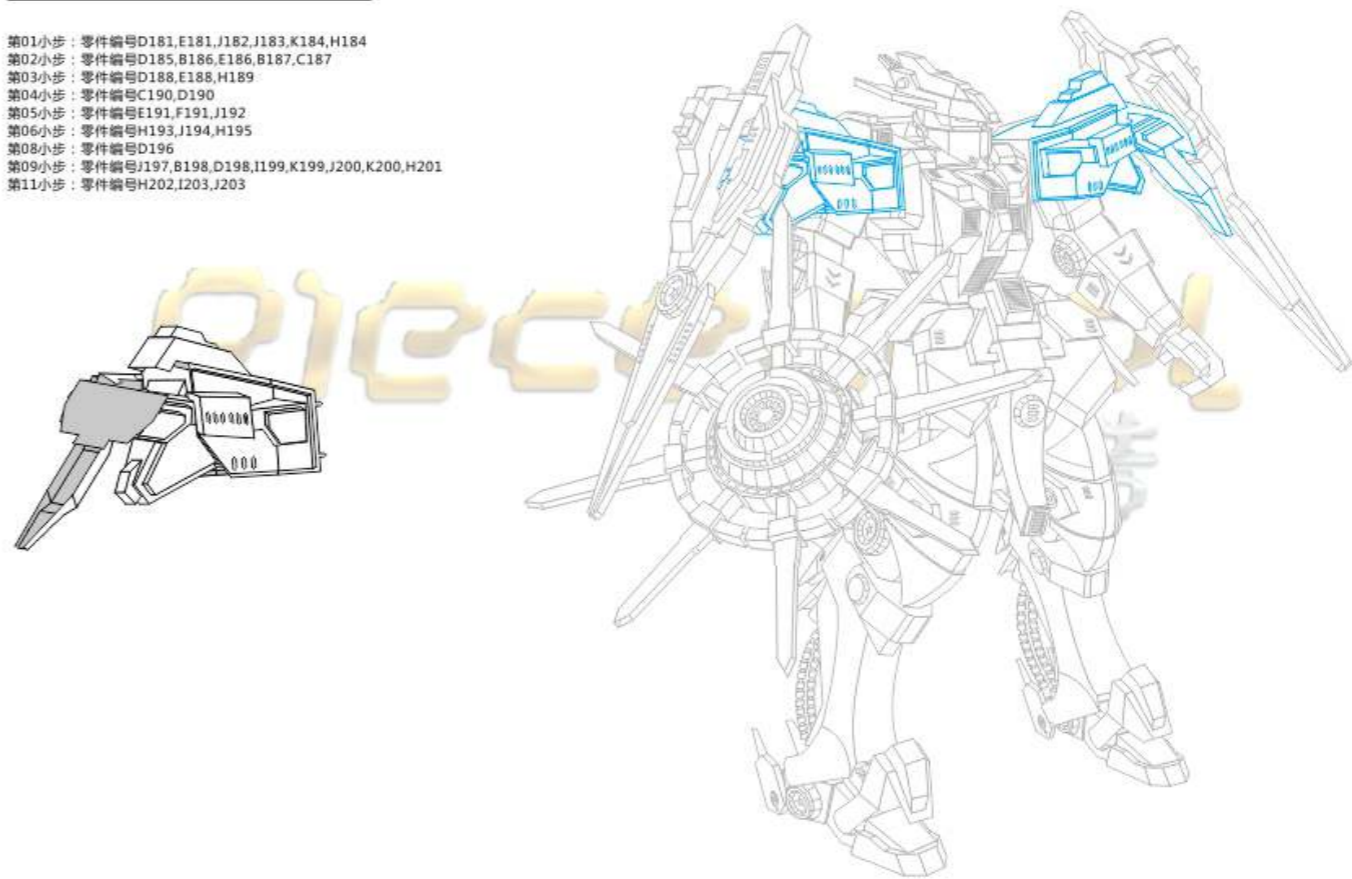
Step.9
右端拼装
右端拼装

Step.9
07

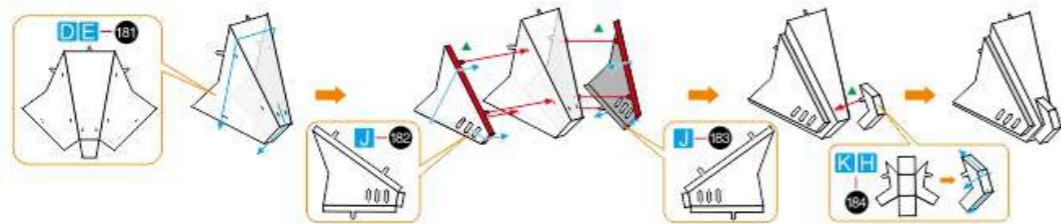


Step.10 肩部拼装

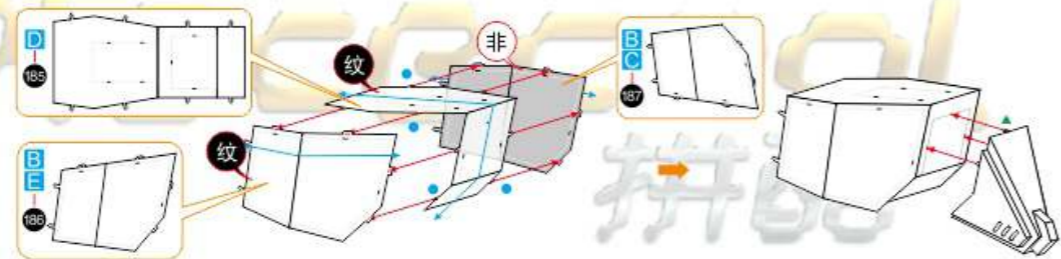
- 第01小步：零件编号D181,E181,J182,J183,K184,H184
- 第02小步：零件编号D185,B186,E186,B187,C187
- 第03小步：零件编号D188,E188,H189
- 第04小步：零件编号C190,D190
- 第05小步：零件编号E191,F191,J192
- 第06小步：零件编号H193,J194,H195
- 第08小步：零件编号D196
- 第09小步：零件编号J197,B198,D198,I199,K199,J200,K200,H201
- 第11小步：零件编号H202,I203,J203



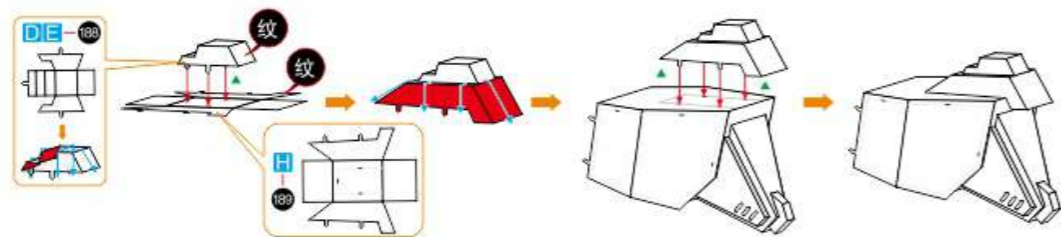
Step.10
01



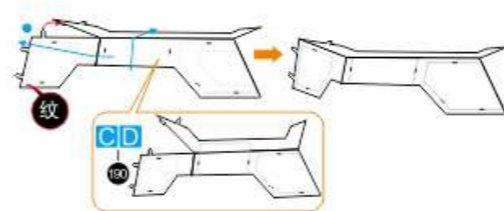
Step.10
02



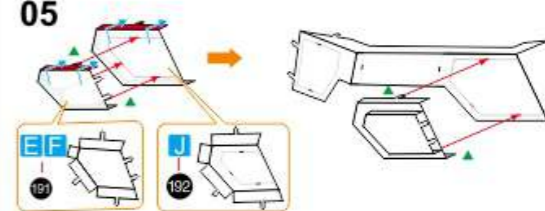
Step.10
03



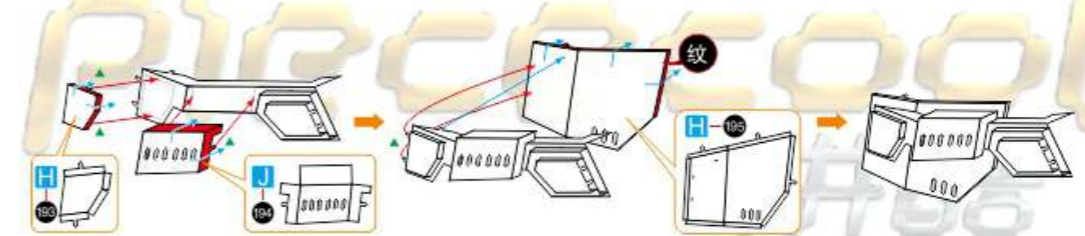
Step.10
04



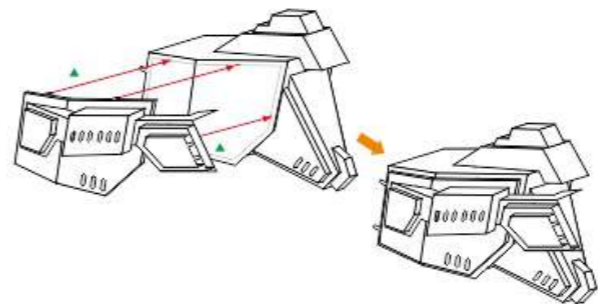
Step.10
05



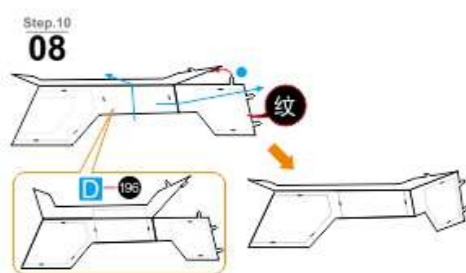
Step.10
06



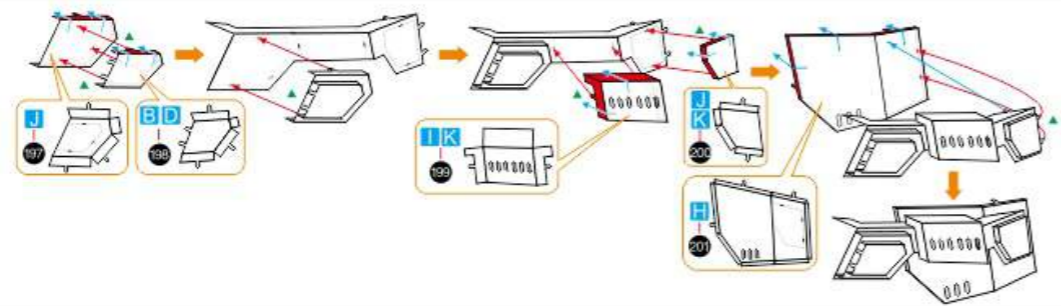
Step.10
07



Step.10
08



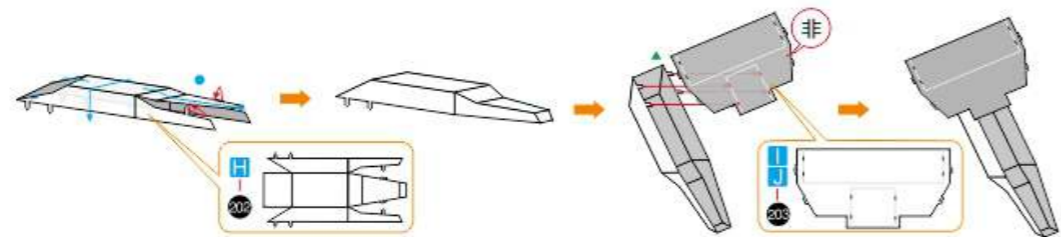
Step.10
09



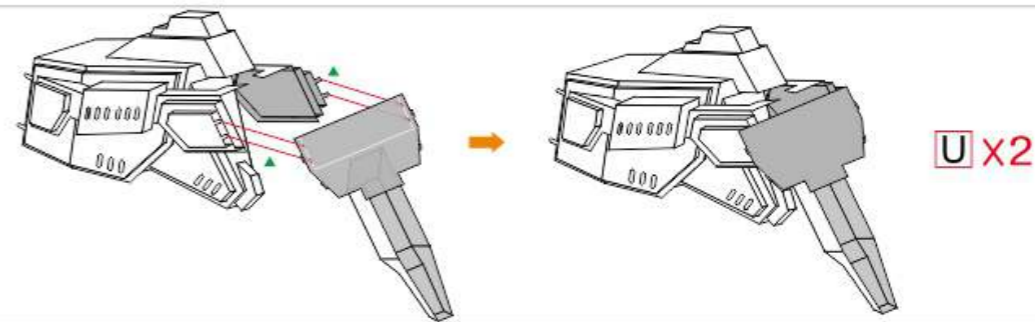
Step.10
10



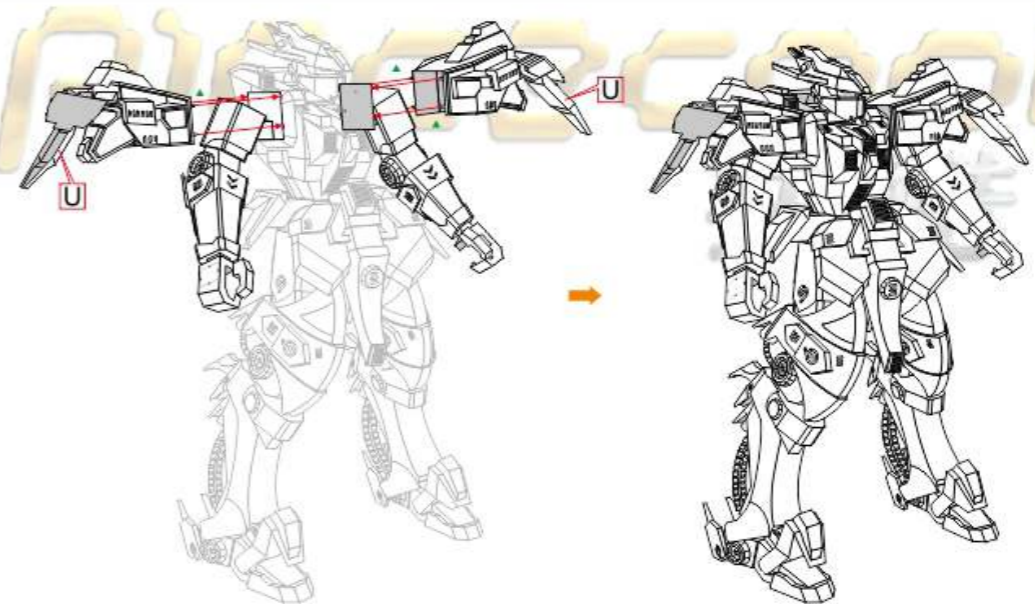
Step.10
11



Step.10
12



Step.10
13

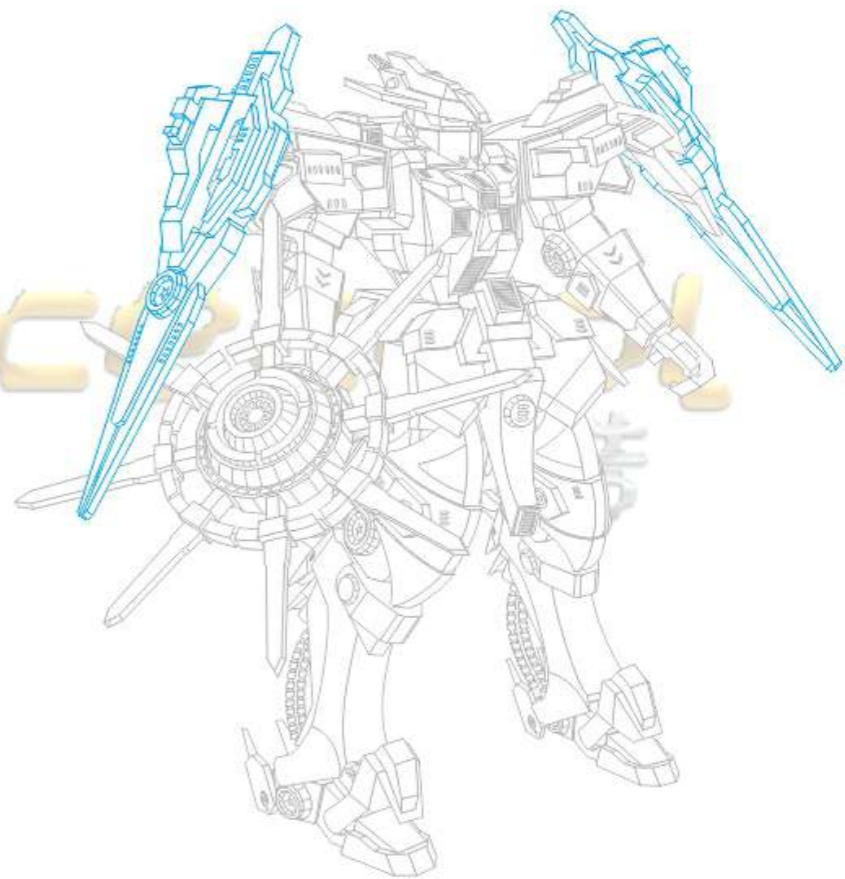


PIECECOOL

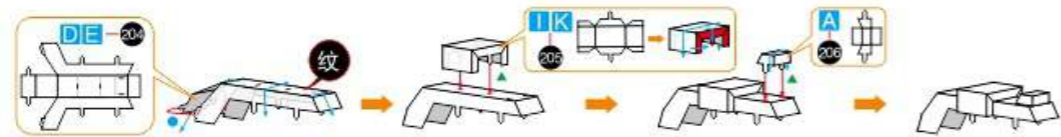
拼酷

Step.11 肩部装备拼装

- 第01小步：零件编号D204,E204,I205,K205,A206
- 第02小步：零件编号I207,J207
- 第03小步：零件编号K208
- 第04小步：零件编号D209,E209,I210,J210
- 第05小步：零件编号K211,B212,D212
- 第06小步：零件编号F213,F214
- 第07小步：零件编号J215,K215,H216,J216,D217,E217,K218,K219



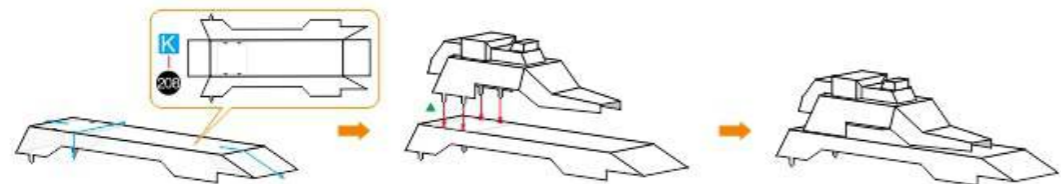
Step.11
01



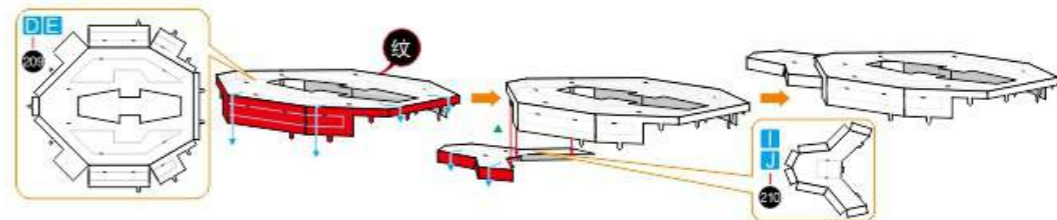
Step.11
02



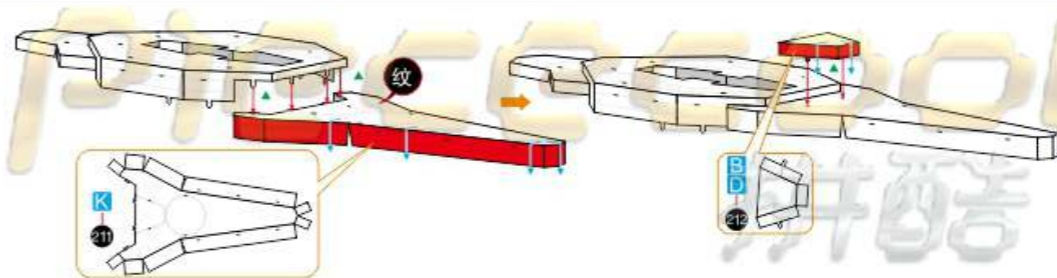
Step.11
03



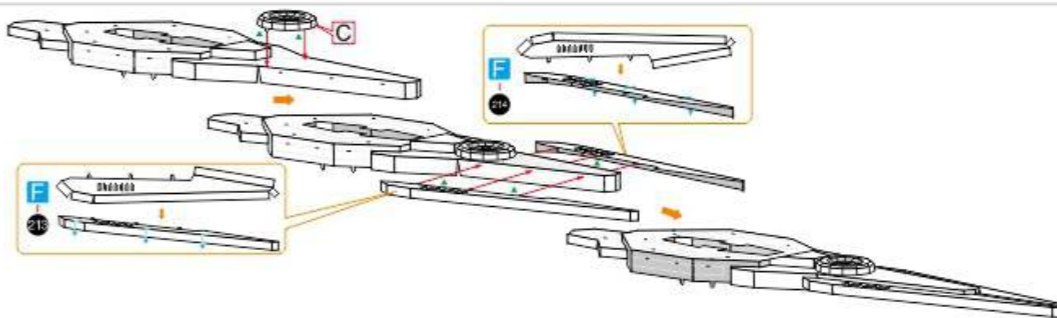
Step.11
04



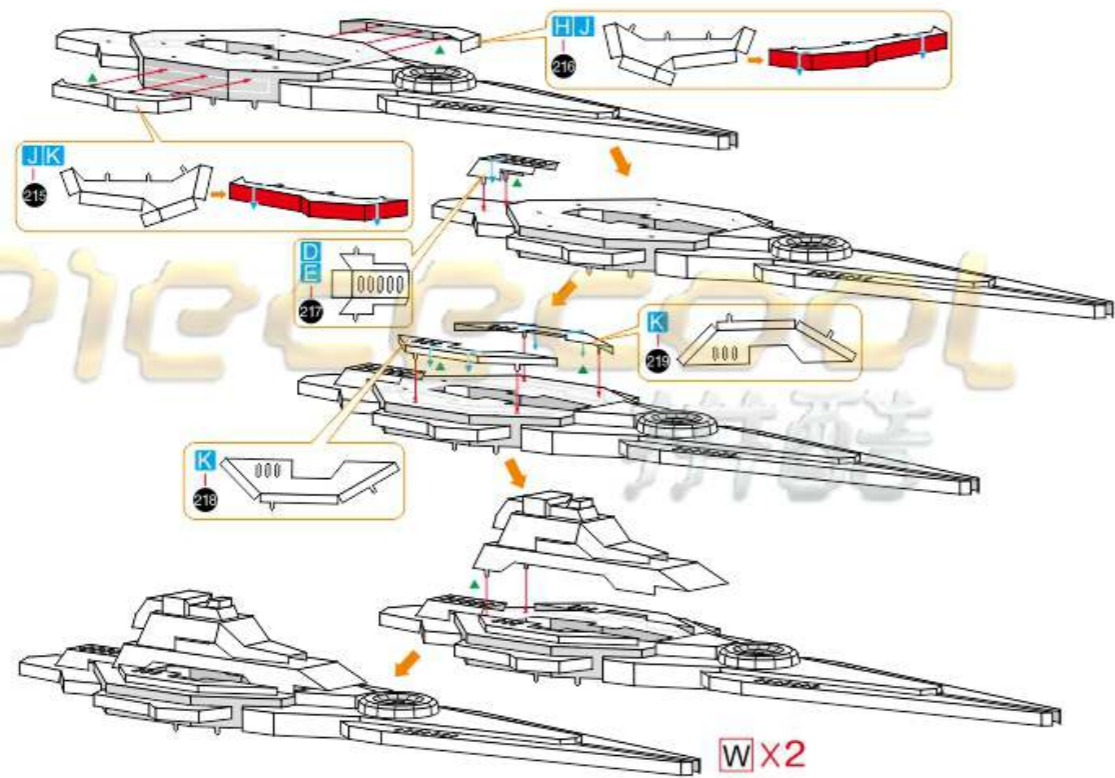
Step.11
05



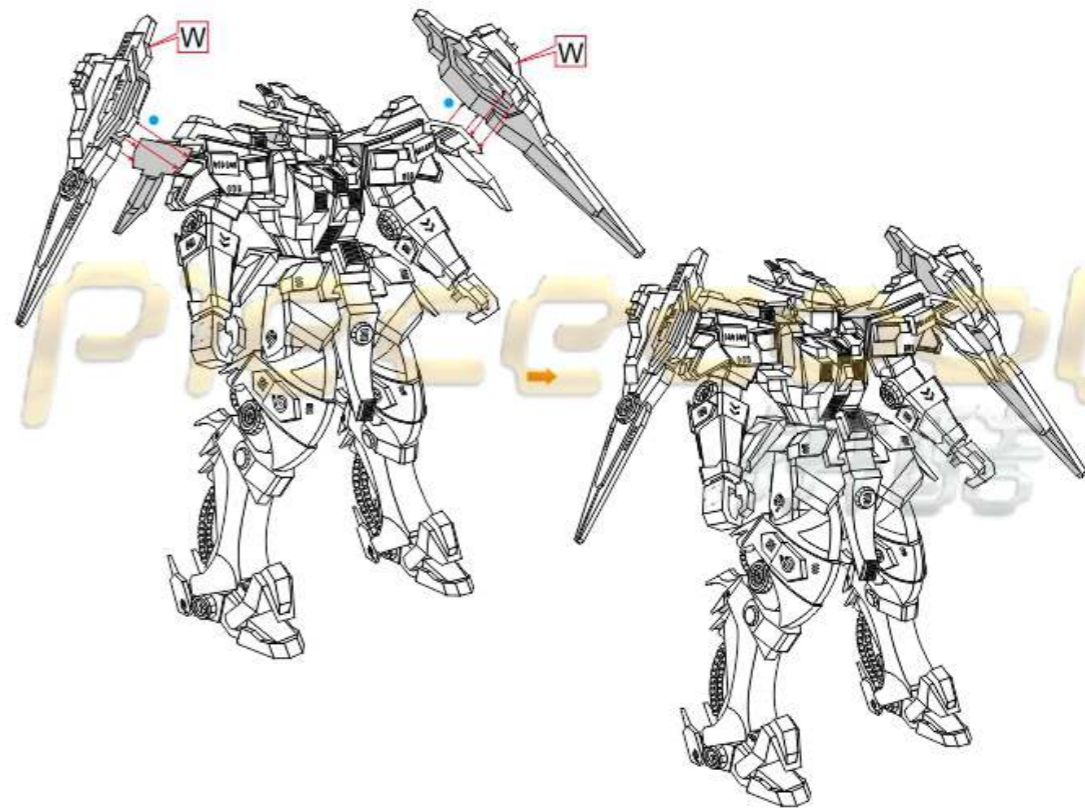
Step.11
06



Step.11
07



Step.11
08



PIECECOOL

拼酷

Step.12 武器装备拼装

第01小步：零件编号F220,F221,B222,C222,F222

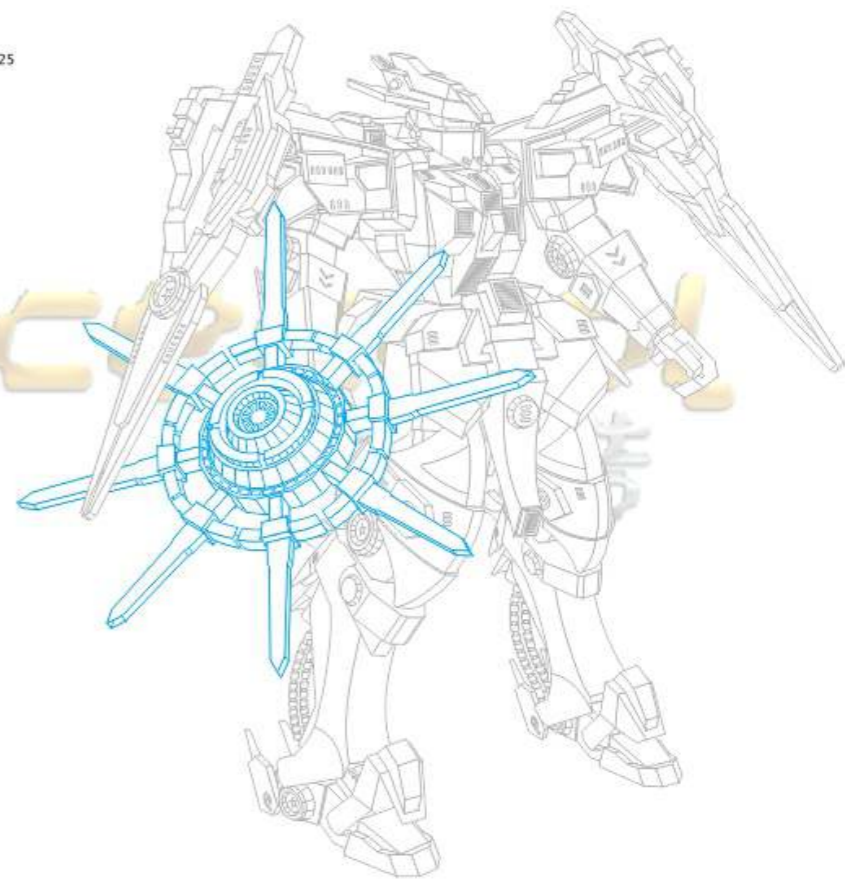
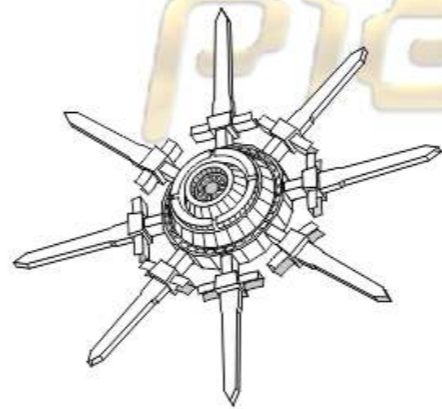
第02小步：零件编号F223,B224,C224,D224,E224,F224,H225,I225,J225,K225

第03小步：零件编号B226,I227

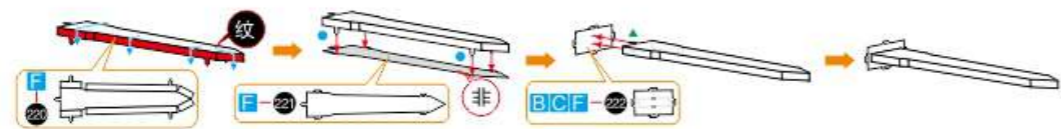
第04小步：零件编号K228,F229

第05小步：零件编号K230,F231

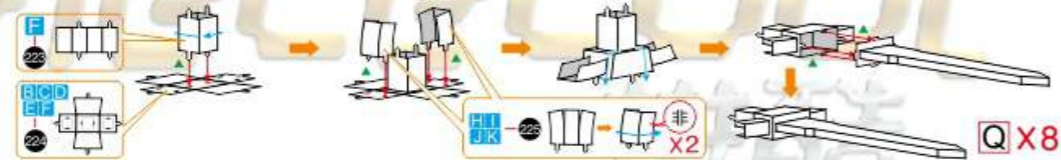
第07小步：零件编号B232



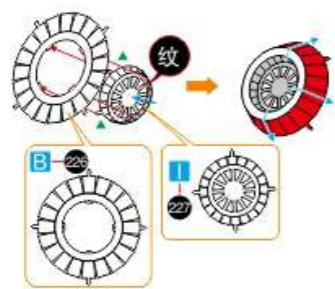
Step.12
01



Step.12
02

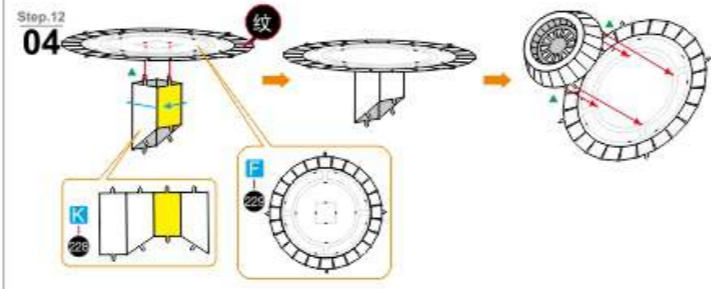


Step.12
03

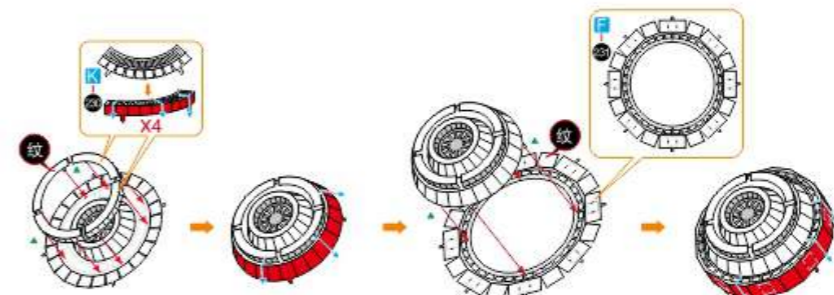


Step.12

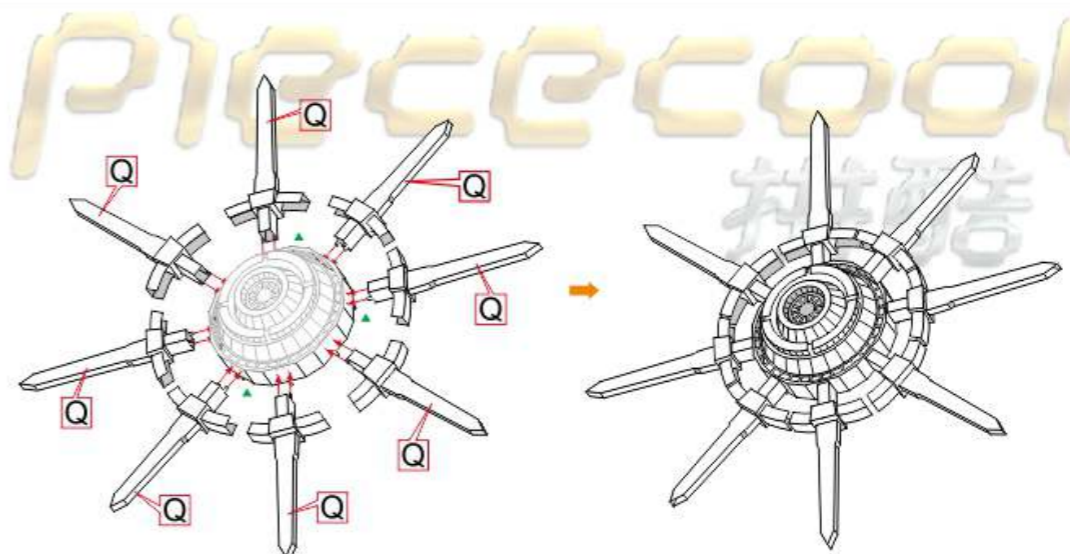
04



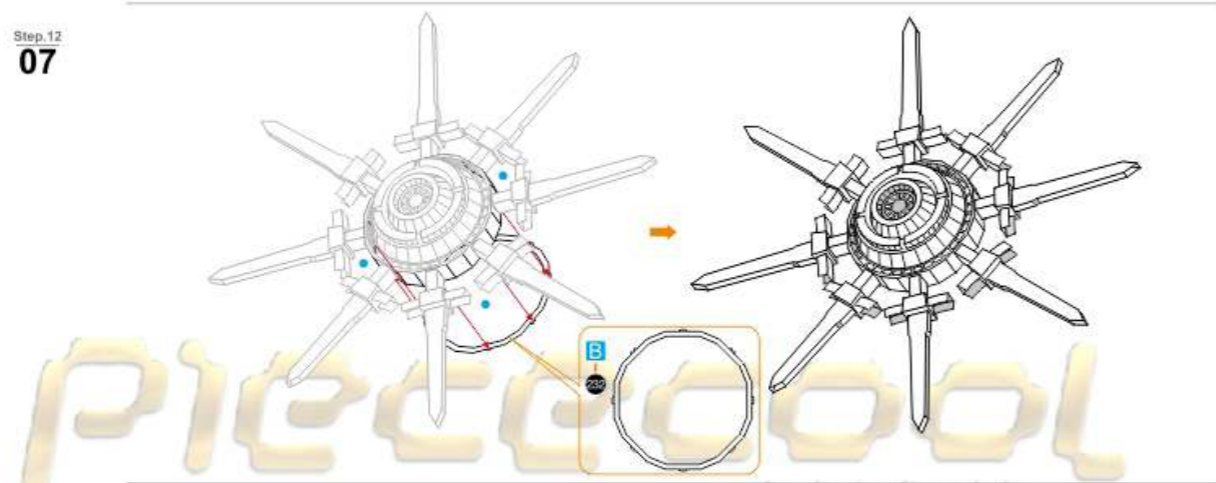
Step.12
05



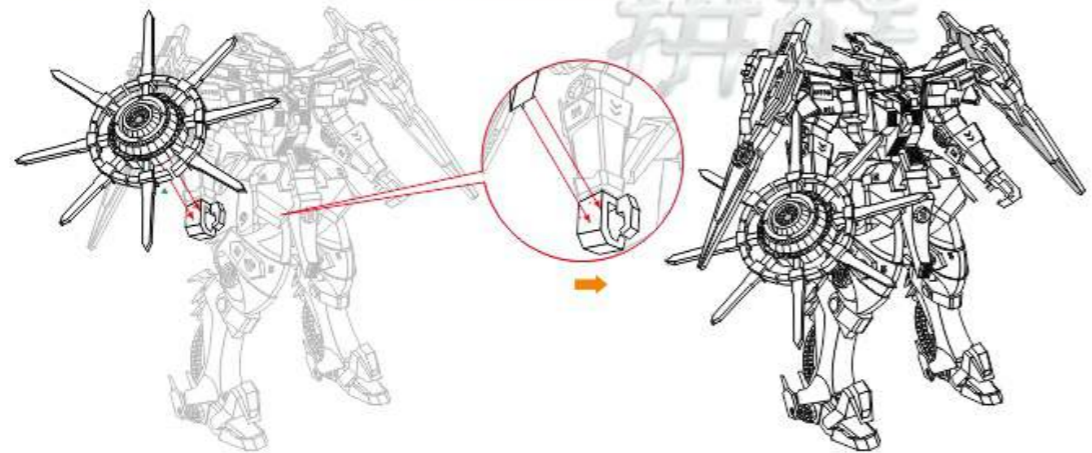
Step.12
06



Step.12
07



Step.12
08



Piececool
拼酷

东莞市微石塑胶金属科技有限公司 出品
WIST PLASTIC & METAL TECHNOLOGY LIMITED
地址：广东省东莞市寮步镇向西工业区村口街2号 邮编：523408
电子邮箱：kf@wist-group.com
服务热线：0769-8119 2243

© Wist Plastic & Metal Technology Limited. All rights reserved.

P093.SMS.20170830.A1